

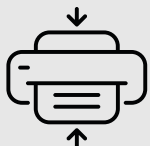
HP Color LaserJet Enterprise 6800 series printers



Product Guide (6800 series)

Powerfully
productive.
Extraordinarily
efficient.

The modern workforce demands radical flexibility and agility to collaborate across teams and tasks. Now you can empower employees with the innovative and efficient HP Color LaserJet Enterprise 6800 series MFPs and printers. With robust copier capabilities in print volume, input and finishing options, scanning and print speed performance, and solutions that scale with your business—these redesigned printers are here to support today's business demands and those yet to come. Explore how this portfolio is right for your business today.



Everything you expect
from an office printer



Customizable
and scalable solutions



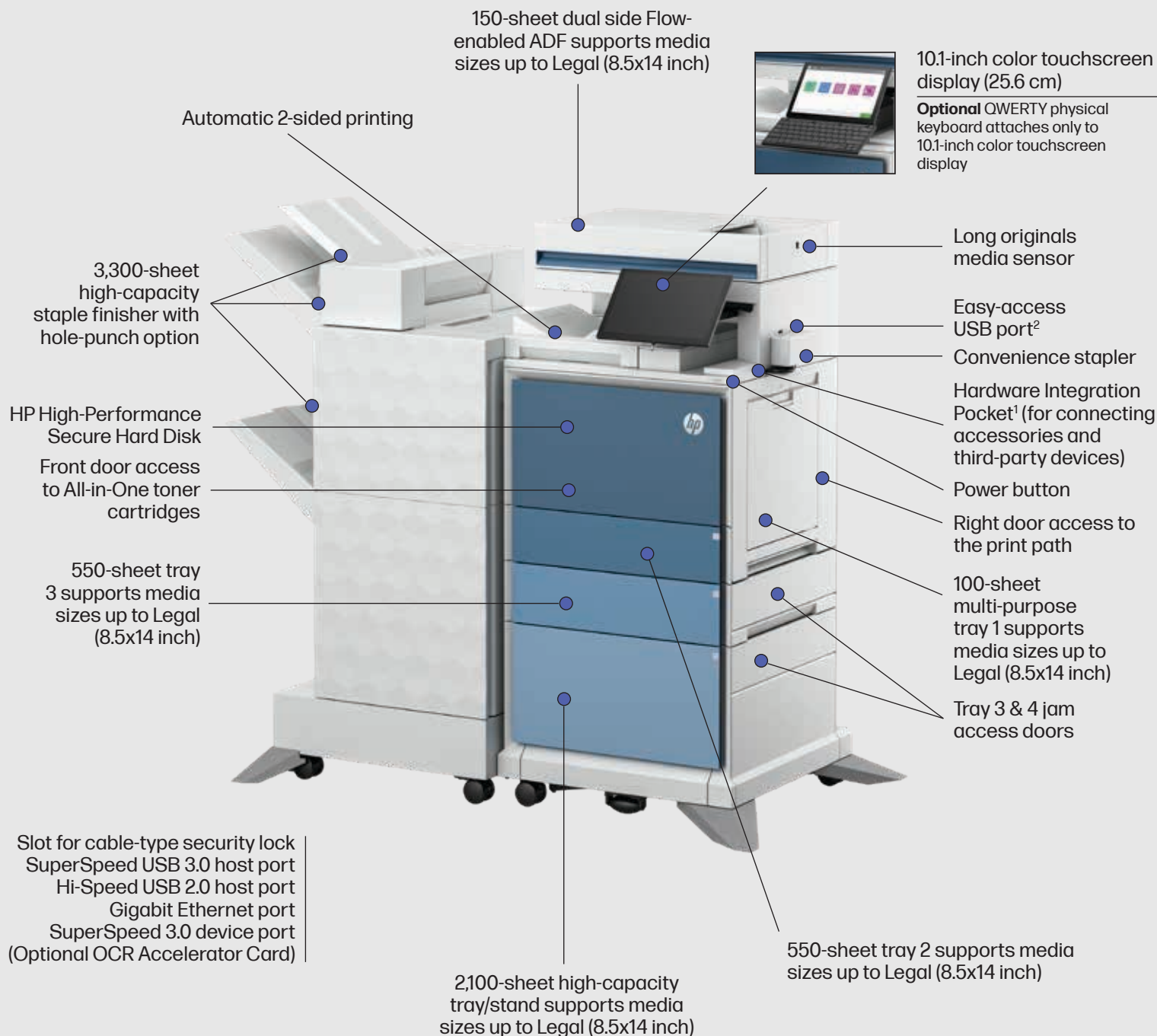
Fast and seamless
digitization



HP WOLF SECURITY
Always on guard with HP
Wolf Security⁵

Get to know the HP Color LaserJet Enterprise 6800 series

HP Color LaserJet Enterprise Flow MFP 6801zfw+ shown



Series at a glance



Model	HP Color LaserJet Enterprise MFP 6800dn	HP Color LaserJet Enterprise Flow MFP 6800zf	HP Color LaserJet Enterprise Flow MFP 6800zfs HP Color LaserJet Enterprise Flow MFP 6801zfs*	HP Color LaserJet Enterprise Flow MFP 6800zfw+ HP Color LaserJet Enterprise Flow MFP 6801zfw+*
Product number	6QN35A	6QN36A	6QN37A 76H10A	(6QN38A + 632P1A) (76H11A + 632P1A)
Functions	Print, copy, and scan (fax and wireless optional) (all models)	Print, copy, scan, and fax (wireless optional) (all models)	Print, copy, scan, and fax (wireless embedded) (all models)	Print, copy, scan, and fax (wireless embedded) (all models)
Print speed (A4 and Letter, black and color) ³	Upto 52/55 ppm (A4/Letter)	Upto 52/55 ppm (A4/Letter)	Upto 52/55 ppm (A4/Letter) Up to 61/65 ppm (A4/letter)*	Upto 52/55 ppm (A4/Letter) Up to 61/65 ppm (A4/letter)*
Control panel	8-inch color touchscreen display	10.1-inch color touchscreen display	10.1-inch color touchscreen display	10.1-inch color touchscreen display
Scan speed ⁴	80/160 ipm (simplex/duplex)	100/200 ipm (simplex/duplex)	100/200 ipm (simplex/duplex)	100/200 ipm (simplex/duplex)
RMPV	Up to 14,000 pages per month	Up to 14,000 pages per month	Up to 14,000 pages per month	Up to 14,000 pages per month
Input capacity	650/3,300 (std/max)	650/3,300 (std/max)	1,750/1,750 (std/max)	3,300/3,300 (std/max)
Output capacity (standard)	500 sheets	500 sheets	1,000 sheets	3,300 sheets
Processor	Quad-core 1.6 GHz	Quad-core 1.6 GHz	Quad-core 1.6 GHz	Quad-core 1.6 GHz
Flow solutions	No	Yes	Yes	Yes
Workpath-enabled	Yes	Yes	Yes	Yes
Extensibility	HP FutureSmart 5, OXPd	HP FutureSmart 5, OXPd	HP FutureSmart 5, OXPd	HP FutureSmart 5, OXPd

Footnotes

1. Solutions deployed through the Hardware Integration Pocket (HIP) may require additional purchase.
2. An administrator must enable the easy-access USB port before use.
3. Measured using ISO/IEC 24734, excludes first set of test documents. For more information, see hp.com/go/printer claims. The exact speed varies depending on the system configuration, software application, driver, and document complexity.
4. Scan speeds measured from ADF. Actual processing speeds may vary depending on scan resolution, network conditions, computer performance, and application software.
5. HP Security is now HP Wolf Security. Security features vary by platform, please see the product data sheet for details.

HP Color LaserJet Enterprise MFP 6800dn technical specifications

Processor speed	1.6 GHz			
Orderable supplies	HP LaserJet Toner Collection Unit 527F9A; HP LaserJet 110V Enhanced Fuser Kit 527G2A; HP LaserJet 220V Enhanced Fuser Kit 527G3A; HP LaserJet Image Transfer Belt 527G8A; HP LaserJet Image Transfer Belt Kit 527G9A; HP LaserJet Tray 2 Roller Kit 527H2A; HP LaserJet MP Tray Roller Kit 527H3A; HP LaserJet ADF Maintenance Kit 6H122A; HP LaserJet ADF Flow Maintenance Kit 6M1P3A			
Printer smart software features	Apple AirPrint™, Mopria-certified, Open Extensibility Platform, FutureSmart firmware, Instant-on Technology, HP Auto-On/Auto-Off technology, Easy-access USB, Two-sided printing, Hardware Integration Pocket, Intuitive 8-in (20.3 cm) touchscreen control panel, print multiple pages per sheet (2, 4, 6, 9, 16), collation, watermarks, store print jobs, print preview			
Power consumption description	717 watts (printing/copying), 63.4 watts (Ready), 1.1 watts (Sleep), 0.1 watts (Auto off/Manual on), 0.1 watts (Manual off)			
Power supply	Type	Built in 110V or 220V power supply (not dual voltage, power supply varies by part number with option code identifier)	Required	Input voltage: 100V to 127V nominal (+/-10%), 50 - 60Hz nominal (+/- 3 Hz), 12A; Input voltage: 220V to 240V nominal, (+/-10%) 50 - 60 Hz nominal (+/- 3 Hz), 6A
What is in the box	HP Color LaserJet Multi-function Printer; HP Black Original LaserJet Toner Cartridge (~9,000 yield), HP Cyan, Magenta and Yellow Original LaserJet Toner Cartridges (~6,000 yield each) (toner cartridges installed), Documentation (Hardware Installation Guide); Power cord			
Replacement cartridges ³	HP 213A Black Original LaserJet Toner Cartridge (~3,500 pages) W2130A; HP 213A Cyan Original LaserJet Toner Cartridge (~3,000 pages) W2131A; HP 213A Yellow Original LaserJet Toner Cartridge (~3,000 pages) W2132A; HP 213A Magenta Original LaserJet Toner Cartridge (~3,000 pages) W2133A; HP 213X High Yield Black Original LaserJet Toner Cartridge (~9,000 pages) W2130X; HP 213X High Yield Cyan Original LaserJet Toner Cartridge (~6,000 pages) W2131X; HP 213X High Yield Yellow Original LaserJet Toner Cartridge (~6,000 pages) W2132X; HP 213X High Yield Magenta Original LaserJet Toner Cartridge (~6,000 pages) W2133X; HP 213Y Extra High Yield Black Original LaserJet Toner Cartridge (~18,000 pages) W2130Y; HP 213Y Extra High Yield Cyan Original LaserJet Toner Cartridge (~12,000 pages) W2131Y; HP 213Y Extra High Yield Yellow Original LaserJet Toner Cartridge (~12,000 pages) W2132Y; HP 213Y Extra High Yield Magenta Original LaserJet Toner Cartridge (~12,000 pages) W2133Y; HP 217Z Ultra Yield Black Original LaserJet Toner Cartridge (~32,000 pages) W2170Z; HP 217Z Ultra Yield Cyan Original LaserJet Toner Cartridge (~24,000 pages) W2171Z; HP 217Z Ultra Yield Yellow Original LaserJet Toner Cartridge (~24,000 pages) W2172Z; HP 217Z Ultra Yield Magenta Original LaserJet Toner Cartridge (~24,000 pages) W2173Z			
Supplies feature	TerraJet Cartridge			
Electromagnetic emission standard	CISPR 22:2008 (International) Class A, CISPR 32:2015 (International) Class A / EN 55032:2015 Class A + A1:2020, CISPR 35:2016 (International) / EN 55035:2017 + A1:2020, EN IEC 61000-3-2:2019, EN 61000-3-3:2013 + A1:2019 + A2:2021, FCC 47 CFR Part 15 Class A, ICES-003, Issue 7 Class A. Other EMC approvals as required by individual countries.			
Safety Approvals and Requirements	IEC 60950-1:2005 +A1:2009 +A2:2013 (International); IEC 62368-1:2014; EN 62368-1:2014(EU); EN 60825-1:2014 +A1:2021/IEC 60825-1:2014 (Class 1 Laser Product); EN 62479:2010/IEC 62479:2010; IEC 62471:2006 / EN 62471:2008; Low Voltage Directive 2014/35/EU with CE Mark (Europe); GS Certificate (Germany, Europe); UL/cUL Listed and UC CoC (US/Canada); UL62368-1 2 nd Ed. 2014-12-01, CSA C22.2 No. 62368-1-14, 2 nd Ed.; Compliance with Laser safety standards 21 CFR 1040.10 and 1040.11 except for deviations pursuant to Laser notice No. 56, Dated May 8, 2019; Other safety approvals as required by individual countries.			
ENERGY STAR® certified	Yes			
Ecolabels	CECP; IT ECO Declaration; Blue Angel; SEPA; EPEAT® Gold registered; KOECO			
Blue Angel compliance	Yes, Blue Angel DE-UZ 219—only ensured when using Original HP supplies			
Sustainable impact specifications	15% post-consumer recycled plastic; ENERGY STAR® certified; EPEAT® registered			
Network capabilities	Yes, via HP Jetdirect Ethernet embedded print server (standard) which supports: 10Base-T, 100Base-Tx, 1000Base-T; 802.3az (EEE) support on Fast Ethernet and Gig Links; IPsec (standard); 802.11a/b/g/n wireless networking (optional).			
Wireless capability	No, Optional wireless direct			
Supported network protocols	Via built-in networking solution: TCP/IP, IPv4, IPv6; Print: TCP-IP port 9100 Direct Mode, LPD (raw queue support only), Web Services printing, IPP 2.0, Apple AirPrint™, FTP Print, Google Cloud Print; Discovery: SLP, Bonjour, Web Services Discovery; IP Config: IPv4 (BootP, DHCP, AutoIP, Manual, TFTP Config, ARP-Ping), IPv6 (Stateless Link-Local and via Router, Stateless via DHCPv6); Management: SNMPv2/v3, HTTP/HTTPS, Telnet, TFTP Config, FTP FW Download, Syslog; Security: SNMPv3, SSL Cert Management, Firewall, ACL, 802.1x			
Mobile printing capability	Apple AirPrint™; Mopria™ certified; NFC touch-to-print (optional)			
Connectivity, Std	1 SuperSpeed USB 3.0 (device); 1 SuperSpeed USB 3.0 (host); 1 Hi-Speed USB 2.0 (host); 1 Gigabit Ethernet 10/100/1000T network; 1 Hardware Integration Pocket 2nd generation (HIP2)			
Copier reduce/enlarge	25 to 400%			
Max. number of copies	Up to 9,999			
Copy resolution	Black text	Up to 600 x 600 dpi	Color text and graphics	Up to 600 x 600 dpi
Copy speed (Black)	Normal, A4	Up to 52 cpm	Normal, Letter	Up to 55 cpm
Copy speed (Color)	Normal, A4	Up to 52 cpm	Normal, Letter	Up to 55 cpm
Digital sending standard features	Scan to Email; Scan to Network Folder; Scan to USB drive; scan to SharePoint; Scan to FTP; Scan to SFTP; Scan to LAN Fax; Scan to Internet Fax; local address book; SMTP over SSL; automatically detect color/monochrome; high compression PDF; image adjustments (darkness, contrast, background clean-up, sharpness); optimize text/picture (text, mixed, printed picture, photograph); content orientation; scan mode (book, 2-sided ID); erase edges; auto page crop; job build; image preview; blank page suppression; automatically straighten			
Package dimensions	Metric	798x598x680 mm	Imperial	31.40x23.50x26.80 in
Max. dimensions	Metric	860 x 820 x 896 mm	Imperial	33.9 x 32.3 x 35.3 in
Product dimensions	Metric	500 x 460 x 651 mm	Imperial	19.7 x 18.1 x 25.6 in
Display description	8.0 in (20.3 cm) Color Graphics Display (CGD) with touchscreen; Rotating (adjustable angle) display			
Acoustic power emissions (active, printing)	6.6 B(A)			
Acoustic pressure emissions bystander (ready)	20 dB(A)			
Operating humidity range	10 to 80% RH			

HP Color LaserJet Enterprise MFP 6800dn technical specifications

Operating humidity range (recommended)	30 to 70% RH			
Operating temperature range	Celsius	10 to 32.5°C	Fahrenheit	50 to 91°F
	Recommended celsius	15 to 27°C	Recommended fahrenheit	59 to 80.6°F
Storage temperature range	Celsius	-20 to 40°C	Fahrenheit	-4 to 104°F
Fax	Optional			
Fax Speed (Letter)	3 sec per page			
Fax speed	Up to 33.6 kbps			
Memory	Standard	6 GB	Maximum	6 GB
Print resolution technologies	HP ImageREt 3600, Enhanced (600 x 600 dpi), Fine Lines (1200 x 1200 dpi), Quickview (300 x 300 dpi)			
Print resolution color (best)	Up to 1200 x 1200 dpi			
Print speed (Letter)	Up to 55 ppm (black) and 55 ppm (color)			
Print speed (Black)	Normal, A4	Up to 52 ppm	Normal, Letter	Up to 55 ppm
Print speed (Color)	Normal, A4	Up to 52 ppm	Normal, Letter	Up to 55 ppm
First page out (Black)	A4, ready	As fast as 6.2 sec	Letter, ready	As fast as 6.0 sec
First page out (Color)	A4, ready	As fast as 6.8 sec	Letter, ready	As fast as 6.5 sec
Duty cycle	Monthly, A4	Up to 100,000 pages	Monthly, Letter	Up to 100,000 pages
Recommended monthly page volume	2,000 to 14,000			
Fonts and typefaces	105 internal TrueType fonts scalable in HP PCL, 92 internal scalable fonts in HP postscript level 3 emulation (Euro symbol built-in); 1 internal Unicode fonts (Andale Mono World Type); 2 internal Windows Vista 8 fonts (Calibri, Cambria); additional font solutions available via third-party flash memory cards; HP LaserJet Fonts and IPDS Emulation available at http://www.hp.com/go/laserjetfonts			
Hard disk	Standard, minimum 500GB HDD; Optional, 256 GB SSD (via CTO)			
Print languages, standard	HP PCL 6; HP PCL 5c; HP postscript level 3 emulation, native PDF printing (v 1.7), URF (AirPrint)			
Printer management	HP Web Jetadmin; Embedded Web Server; HP Security Manager; HP Insights; HP Advance; HP Command Center; HP Smart Device Services (SDS)			
Top key features	Automatic document feeder; Optional high-capacity trays; Touchscreen; TerraJet Cartridge			
Target number of users and print volume	For teams over 25 users; Prints up to 14,000 pages/month			
AIO functions	Print, copy, scan, fax (optional)			
Duplex print options	Automatic			
Print technology	Laser			
Paper trays, standard	2			
Capacity, Std.	Input	Up to 650 sheets	Output	Up to 500 sheets
Media type and capacity tray 1	Paper: 100 sheets of 75 g/m ² media; Envelopes: 10			
Paper handling standard (Input)	550-sheet input tray, 100-sheet multi-purpose tray			
Input Capacity, Max, Envelopes	Up to 10 envelopes			
Product short name	6800			
Typical Electricity Consumption (TEC) number	0.709 kWh/week (Energy Star 3.0); 0.659 kWh/week (Blue Angel)			
Number of simultaneous users (local + network)	10-30 users			
Scan resolution	Hardware	Up to 600 x 600 dpi	Optical	Up to 600 dpi
	Enhanced	Up to 600 dpi		
Scan speed (normal, A4)	Up to 76 ppm/152 ipm (b&w), up to 76 ppm/152 ipm (color)			
Automatic Document Feeder Capacity	Standard, 150 sheets			
Color scanning	Yes			
Grayscale levels	256			
Scan input modes	Front panel applications: Copy; Fax; Scan to Email; Scan to Network Folder; Scan to USB; Scan to Job Storage; Open Extensibility Platform (EXP); HP Workpath applications			
Scan size maximum	ADF, metric	215.9 x 863.6 mm	ADF, imperial	8.5 x 34.0 in
	Flatbed, metric	216 x 356 mm	Flatbed, imperial	8.5 x 14 in

HP Color LaserJet Enterprise MFP 6800dn technical specifications

Scan size minimum	ADF, metric	68 x 127 mm	ADF, imperial	2.7 x 5 in
Bit depth	24-bit			
TWAIN Version	Version 2.4			
Scan file format	PDF; TIFF; MTIFF; Hi-Compression PDF; XPS; PDF/A; JPEG			
Scan type	Flatbed; ADF			
Security management	Identity management: Kerberos authentication; LDAP authentication; 1,000 user pin codes; optional HP and 3 rd party advanced authentication solutions (e.g., badge readers); Network: IPsec/firewall with certificate; Pre-shared key; Supports WJA-10 IPsec configuration Plug-in; 802.1X authentication (EAP-PEAP; EAP-TLS); SNMPv3; HTTPS; Certificates; Access Control List; Data: Storage encryption; Encrypted PDF & Email (uses FIPS 140 validated cryptographic libraries from Microsoft); Secure Erase; SSL/TLS (HTTPS); Encrypted credentials; Device: Security lock slot; USB port disablement; hardware integration pocket for security solutions; Intrusion Detection with Red Balloon Security technology - constant in-device monitoring for attacks; SureStart Secure Boot - BIOS Integrity Checking with self-healing capability; Whitelisting - loads only known good code (DLLs, EXEs, ...); Security management: Compatible with Device Security Syslog Messages processed and accessible in Arcsight and Splunk SIEMs			
Services (Care Pack)	U45SXE - HP 3-year Next Business Day with DMR Service for Color LaserJet Enterprise MFP 6800; U45SYE - HP 4-year Next Business Day with DMR Service for Color LaserJet Enterprise MFP 6800; U45SZE - HP 5-year Next Business Day with DMR Service for Color LaserJet Enterprise MFP 6800; U45TOE - HP 3-year 4-hour 9x5 with DMR Service for Color LaserJet Enterprise MFP 6800; U45T1E - HP 4-year 4-hour 9x5 with DMR Service for Color LaserJet Enterprise MFP 6800; U45T2E - HP 5-year 4-hour 9x5 with DMR Service for Color LaserJet Enterprise MFP 6800; U45T3E - HP 3-year Next Business Day Call-to-Repair with DMR Service for Color LaserJet Enterprise MFP 6800; U45T4E - HP 4-year Next Business Day Call-to-Repair with DMR Service for Color LaserJet Enterprise MFP 6800; U45T5E - HP 5-year Next Business Day Call-to-Repair with DMR Service for Color LaserJet Enterprise MFP 6800; U45T6E - HP 3-year Channel Parts Exchange with DMR Service for Color LaserJet Enterprise MFP 6800; U45T7E - HP 4-year Channel Parts Exchange with DMR Service for Color LaserJet Enterprise MFP 6800; U45T8E - HP 5-year Channel Parts Exchange with DMR Service for Color LaserJet Enterprise MFP 6800; U45T9E - HP 1-year Post Warranty Next Business Day with DMR Service for Color LaserJet Enterprise MFP 6800; U45TBPE - HP 2-year Post Warranty Next Business Day with DMR Service for Color LaserJet Enterprise MFP 6800; U45TCPE - HP 1-year Post Warranty 4-hour 9x5 with DMR Service for Color LaserJet Enterprise MFP 6800; U45TDPE - HP 2-year Post Warranty 4-hour 9x5 with DMR Service for Color LaserJet Enterprise MFP 6800; U45TFPE - HP 1-year PW NBD Call-to-Repair with DMR Service for Color LaserJet Enterprise MFP 6800; U45TGPE - HP 2-year PW NBD Call-to-Repair with DMR Service for Color LaserJet Enterprise MFP 6800; U45THPE - HP 1-year PW Channel Parts Exchange with DMR Service for Color LaserJet Enterprise MFP 6800; U45TJPE - HP 2-year PW Channel Parts Exchange with DMR Service for Color LaserJet Enterprise MFP 6800; U9JT2E - HP Installation Service with network configuration for workgroup printer (1 unit); U45VXE - HP Maintenance Kit Replacement Service for Color LaserJet Enterprise MFP 6800 Fuser 110 Enhanced; U45VYE - HP Maintenance Kit Replacement Service for Color LaserJet Enterprise MFP 6800x Fuser 220 Enhanced; U45VZE - HP Maintenance Kit Replacement Service for Color LaserJet Enterprise MFP 6800x ITB; U45W0E - HP Maintenance Kit Replacement Service for Color LaserJet Enterprise MFP 6800x ITB Kit; U45W1E - HP Maintenance Kit Replacement Service for Color LaserJet Enterprise MFP 6800x X677xx TCU; U45W2E - HP Maintenance Kit Replacement Service for Color LaserJet Enterprise MFP 6800x X677xx MP Tray Roller; U45W3E - HP Maintenance Kit Replacement Service for Color LaserJet Enterprise MFP 6800x X677xx Tray 2 Roller			
Mac compatible	Yes			
Software included	No software solutions are included in the box, only on http://hp.com , http://123.hp.com			
Media types	Paper (plain, light, intermediate, light bond, bond, recycled, mid-weight, heavy, mid-weight glossy, heavy glossy, extra heavy, extra heavy glossy, cardstock, card glossy), color transparency, labels, letterhead, envelope, pre-printed, pre-punched, colored, rough, opaque film, user-defined			
Standard media sizes supported	Metric	Tray 1: A4, A5, A6, RA4, B5, B6, 16k, 10 x 15 cm, Oficio, postcards (JIS single and double), envelopes (DL, C5, B5, C6); Tray 2, optional 1x550-sheet feeders: A4, A5, A6, RA4, B5, B6, 10 x 15 cm, Oficio, 16k, Dpostcard (JIS); optional 2,100-sheet high-capacity feeder: A4, A5 (with optional accessory)	Imperial	Tray 1: Letter, Legal, Executive, Statement, Oficio, 3 x 5 in, 4 x 6 in, 5 x 7 in, 5 x 8 in, envelopes (No. 9, No. 10, Monarch); Tray 2, optional 1x550-sheet feeders: Letter, Legal, Executive, Statement, Oficio, 4 x 6 in, 5 x 7 in, 5 x 8 in; optional 2,100-sheet high-capacity feeder: letter, legal, statement (with optional accessory)
Media sizes custom	Metric	Tray 1: 64 x 127 to 216 x 1200 mm; Tray 2, optional 1x550-sheet feeders: 101 x 148 to 216 x 356 mm; optional 2,100-sheet high-capacity feeder: custom sizes not supported in this tray	Imperial	Tray 1: 2.52 x 5 to 8.5 x 47.24 in; Tray 2, optional 1x550-sheet feeders: 4 x 5.83 to 8.5 x 14 in; optional 2,100-sheet high-capacity feeder: custom sizes not supported in this tray
Media size, tray 1 (metric)	A4, A5, A6, RA4, B5, B6, 10 x 15 cm, Oficio 216 x 340, 16k, Postcard (JIS), DPostcard (JIS), Envelopes (DL, C5, B5, C6); custom 64 x 127 to 216 x 1200 mm			
Media weights supported, by paper path	Metric	Tray 1: 60 to 220 g/m ² (plain), 120 to 220 g/m ² (glossy); Tray 2: 60 to 220 g/m ² (plain), 120 to 220 g/m ² (glossy); Optional 550-sheet input trays: 60 to 220 g/m ² (plain), 120 to 220 g/m ² (glossy); Optional 2,100-sheet high-capacity input: 60 to 220 g/m ² (plain)	Imperial	Tray 1: 16 to 58 lb (plain), 32 to 58 lb (glossy); Tray 2: 16 to 58 lb (plain), 32 to 58 lb (glossy); Optional 550-sheet input trays: 16 to 58 lb (plain), 32 to 58 lb (glossy); Optional 2,100-sheet high-capacity input: 16 to 58 lb (plain)
Media Weights Supported, Tray 1 (metric)	60 to 220 g/m ² (plain), 120 to 220 g/m ² (glossy)			
Media size, ADF	Legal; Oficio; Executive; Statement; 16k; A4; RA4; A5; A6; B5; B6 (JIS); Postcard (JIS); DPostcard (JIS); 4 x 6 in; 5 x 7 in; 5 x 8 in; 68 x 147 mm to 215.9 x 863.6 mm; 2.68 x 5.79 in to 8.46 x 34 in			
Media weights supported, ADF	Metric	45 to 199 g/m ²	Imperial	12 to 53 lb
Key media sizes supported	Metric	A4	Imperial	Letter; Legal
Control panel	8.0 in (20.3 cm) touchscreen with color graphics			
System requirements	Macintosh, Minimum	2 GB available hard drive space; Internet connection; or USB port; Internet browser. For additional OS hardware requirements see apple.com	Minimum	2 GB available hard disk space; Internet connection; or USB port; Internet browser. For additional OS hardware requirements see microsoft.com
Manufacturer warranty	One-year Next Business Day Onsite Warranty. Warranty and support options vary by product, country and local legal requirements. Go to http://hp.com/support to learn about HP award-winning service and support options in your region.			
Weight	Metric	42.20 kg	Imperial	92.84 lb
Package weight	Metric	46.20 kg	Imperial	101.64 lb

HP Color LaserJet Enterprise Flow MFP 6800zf technical specifications

Processor speed	1.6 GHz			
Orderable supplies	HP LaserJet Toner Collection Unit 527F9A; HP LaserJet 110V Enhanced Fuser Kit 527G2A; HP LaserJet 220V Enhanced Fuser Kit 527G3A; HP LaserJet Image Transfer Belt 527G8A; HP LaserJet Image Transfer Belt Kit 527G9A; HP LaserJet Tray 2 Roller Kit 527H2A; HP LaserJet MP Tray Roller Kit 527H3A; HP LaserJet ADF Maintenance Kit 6H122A; HP LaserJet ADF Flow Maintenance Kit 6M1P3A; HP Staple Cartridge Refill (5,000 staples) J8J96A; HP Staple Cartridge Pack (3,000 staples) Q7432A			
Printer smart software features	Apple AirPrint™, Mopria-certified, Open Extensibility Platform, FutureSmart firmware, Instant-on Technology, HP Auto-On/Auto-Off technology, Easy-access USB, Two-sided printing, Hardware Integration Pocket, Intuitive 10.1-in touchscreen control panel, print multiple pages per sheet (2, 4, 6, 9, 16), collation, watermarks, store print jobs, print preview			
Power consumption description	717 watts (printing/copying), 63.4 watts (Ready), 1.1 watts (Sleep), 0.1 watts (Auto off/Manual on), 0.1 watts (Manual off)			
Power supply	Type	Built in 110V or 220V power supply (not dual voltage, power supply varies by part number with option code identifier)	Required	Input voltage: 100V to 127V nominal (+/-10%), 50 - 60Hz nominal (+/- 3 Hz), 12A; Input voltage: 220V to 240V nominal, (+/-10%) 50 - 60 Hz nominal (+/- 3 Hz), 6A
What is in the box	HP Color LaserJet Multi-function Printer; HP Black Original LaserJet Toner Cartridge (~9,000 yield), HP Cyan, Magenta and Yellow Original LaserJet Toner Cartridges (~6,000 yield each) (toner cartridges installed), Documentation (Hardware Installation Guide); Power cord			
Replacement cartridges ²	HP 213A Black Original LaserJet Toner Cartridge (~3,500 pages) W2130A; HP 213A Cyan Original LaserJet Toner Cartridge (~3,000 pages) W2131A; HP 213A Yellow Original LaserJet Toner Cartridge (~3,000 pages) W2132A; HP 213A Magenta Original LaserJet Toner Cartridge (~3,000 pages) W2133A; HP 213X High Yield Black Original LaserJet Toner Cartridge (~9,000 pages) W2130X; HP 213X High Yield Cyan Original LaserJet Toner Cartridge (~6,000 pages) W2131X; HP 213X High Yield Yellow Original LaserJet Toner Cartridge (~6,000 pages) W2132X; HP 213X High Yield Magenta Original LaserJet Toner Cartridge (~6,000 pages) W2133X; HP 213Y Extra High Yield Black Original LaserJet Toner Cartridge, (~18,000 pages) W2130Y; HP 213Y Extra High Yield Cyan Original LaserJet Toner Cartridge (~12,000 pages) W2131Y; HP 213Y Extra High Yield Yellow Original LaserJet Toner Cartridge (~12,000 pages) W2132Y; HP 213Y Extra High Yield Magenta Original LaserJet Toner Cartridge (~12,000 pages) W2133Y; HP 217Z Ultra Yield Black Original LaserJet Toner Cartridge (~32,000 pages) W2170Z; HP 217Z Ultra Yield Cyan Original LaserJet Toner Cartridge (~24,000 pages) W2171Z; HP 217Z Ultra Yield Yellow Original LaserJet Toner Cartridge (~24,000 pages) W2172Z; HP 217Z Ultra Yield Magenta Original LaserJet Toner Cartridge (~24,000 pages) W2173Z			
Supplies feature	TerraJet Cartridge			
Electromagnetic emission standard	CISPR 22:2008 (International) Class A, CISPR 32:2015 (International) Class A / EN 55032:2015 Class A + A11:2020, CISPR 35:2016 (International) / EN 55035:2017 + A11:2020, EN IEC 61000-3-2:2019, EN 61000-3-3:2013 + A1:2019 + A2:2021, FCC 47 CFR Part 15 Class A, ICES-003, Issue 7 Class A. Other EMC approvals as required by individual countries.			
Safety Approvals and Requirements	IEC 60950-1:2005 + A1:2009 + A2:2013 (International); IEC 62368-1:2014; EN 62368-1:2014 (EU); EN 60825-1:2014/IEC 60825-1:2014 (Class 1 Laser Product); EN 62479:2010/IEC 62479:2010; IEC 62471:2006 / EN 62471:2008; Low Voltage Directive 2014/35/EU with CE Mark (Europe); GS Certificate (Germany, Europe); UL/cUL Listed and UC CoC (US/Canada); UL 62368-1 2 nd Ed. 2014-12-01, CSA C22.2 No. 62368-1-14, 2 nd Ed.; Compliance with laser safety standards 21 CFR 1040.10 and 1040.11 except for deviations pursuant to Laser Notice No. 56, dated May 8, 2019; Other safety approvals as required by individual countries.			
ENERGY STAR® certified	Yes			
Ecolabels	CECP; IT ECO Declaration; Blue Angel; EPEAT® Gold registered; SEPA; KOECO			
Blue Angel compliance	Yes, Blue Angel DE-UZ 219—only ensured when using Original HP supplies			
Sustainable impact specifications	15% post-consumer recycled plastic; ENERGY STAR® certified; EPEAT® registered			
Network capabilities	Yes, via HP Jetdirect Ethernet embedded print server (standard) which supports: 10Base-T, 100Base-Tx, 1000Base-T; 802.3az (EEE) support on Fast Ethernet and Gig Links; IPsec (standard); 802.11a/b/g/n wireless networking (optional).			
Supported network protocols	Via built-in networking solution: TCP/IP, IPv4, IPv6; Print: TCP-IP port 9100 Direct Mode, LPD (raw queue support only), Web Services printing, IPP 2.0, Apple AirPrint™, FTP Print, Google Cloud Print; Discovery: SLP, Bonjour, Web Services Discovery; IP Config: IPv4 (BootP, DHCP, AutoIP, Manual, TFTP Config, ARP-Ping), IPv6 (Stateless Link-Local and via Router, Stateless via DHCPv6); Management: SNMPv2/v3, HTTP/HTTPS, Telnet, TFTP Config, FTP FW Download, Syslog; Security: SNMPv3, SSL Cert Management, Firewall, ACL, 802.1x			
Mobile printing capability	Apple AirPrint™; Mopria™ certified; NFC touch-to-print (optional)			
Connectivity, Std.	1 Fax; 1 Gigabit Ethernet 10/100/1000T network; 1 Hardware Integration Pocket 2nd generation (HIP2); 1 Hi-Speed USB 2.0 (host); 1 SuperSpeed USB 3.0 (device); 1 SuperSpeed USB 3.0 (host)			
Copier reduce/enlarge	25 to 400%			
Max. number of copies	Up to 9,999			
Copy resolution	Black text	Up to 600 x 600 dpi	Color text and graphics	Up to 600 x 600 dpi
Copy speed (Black)	Normal, A4	Up to 52 cpm	Normal, Letter	Up to 55 cpm
Copy speed (Color)	Normal, A4	Up to 52 cpm	Normal, Letter	Up to 55 cpm
Digital sending standard features	Scan to Email; Scan to Network Folder; Scan to USB drive; Scan to SharePoint; Scan to FTP; Scan to SFTP; Scan to LAN Fax; Scan to Internet Fax; local address book; SMTP over SSL; automatically detect color/monochrome; high compression PDF; image adjustments (darkness, contrast, background cleanup, sharpness); optimize text/picture (text, mixed, printed picture, photograph); content orientation; Scan mode (book, 2-sided ID); erase edges; auto page crop; job build; image preview; blank page suppression; automatically straighten; embedded OCR; optimize text/picture (auto); Scan to multi-destination; automatic tone, auto orientation; multi-feed detection; Reverse and Retry; document editing; auto paper color removal; job separation (blank page, barcode); watermark; stamps			
Package dimensions	Metric	798x598x680 mm	Imperial	31.40x23.50x26.80 in
Max. dimensions	Metric	860 x 820 x 896 mm	Imperial	33.9 x 32.3 x 35.3 in
Product dimensions	Metric	500x460x651 mm	Imperial	19.7x18.1x25.6 in
Display description	10.1-in Color Graphics Display (CGD) with touchscreen; Rotating (adjustable angle) display			
Acoustic power emissions (active, printing)	6.6 B(A)			
Acoustic pressure emissions bystander (ready)	18 dB(A)			
Operating humidity range	10 to 80% RH			
Operating humidity range (recommended)	30 to 70% RH			

HP Color LaserJet Enterprise Flow MFP 6800zf technical specifications

Operating Temperature Range	Celsius	10 to 32.5°C	Fahrenheit	50 to 91°F
	Recommended celsius	15 to 27°C	Recommended fahrenheit	59 to 80.6°F
Storage temperature range	Celsius	-20 to 40°C	Fahrenheit	-4 to 104°F
Fax	Yes			
Fax Speed (Letter)	3 sec per page			
Fax speed	Up to 33.6 kbps			
Memory	Standard	6 GB	Maximum	6 GB
Print resolution technologies	HP ImageREt 3600, Enhanced (600 x 600 dpi), Fine Lines (1200 x 1200 dpi), Quickview (300 x 300 dpi)			
Print resolution color (best)	Up to 1200 x 1200 dpi			
Print speed (Letter)	Up to 55 ppm (black) and 55 ppm (color)			
Print speed (Black)	Normal, A4	Up to 52 ppm	Normal, Letter	Up to 55 ppm
Print speed (Color)	Normal, A4	Up to 52 ppm	Normal, Letter	Up to 55 ppm
First page out (Black)	A4, ready	As fast as 6.1 sec	Letter, ready	As fast as 6.0 sec
First page out (Color)	A4, ready	As fast as 6.6 sec	Letter, ready	As fast as 6.5 sec
Duty Cycle	Monthly, A4	Up to 100,000 pages	Monthly, Letter	Up to 100,000 pages
Recommended monthly page volume	2,000 to 14,000			
Fonts and typefaces	105 internal TrueType fonts scalable in HP PCL, 92 internal scalable fonts in HP postscript level 3 emulation (Euro symbol built-in); 1 internal Unicode fonts (Andale Mono World Type); 2 internal Windows Vista 8 fonts (Calibri, Cambria); additional font solutions available via third-party flash memory cards; HP LaserJet Fonts and IPDS Emulation available at http://www.hp.com/go/laserjetfonts			
Hard disk	Standard, minimum 500GB HDD; Optional, 256 GB SSD (via CTO)			
Print languages, standard	HP PCL 6; HP PCL 5c; HP postscript level 3 emulation, native PDF printing (v 1.7), URF (AirPrint)			
Printer management	HP Web Jetadmin; Embedded Web Server; HP Security Manager; HP Insights; HP Advance; HP Command Center; HP Smart Device Services (SDS)			
Top key features	Flow; Touchscreen; Stapling; TerraJet Cartridge			
Target number of users and print volume	For teams over 25 users; Prints up to 14,000 pages/month			
AIO functions	Print, copy, scan, fax			
Duplex print options	Automatic			
Print technology	Laser			
Paper trays, standard	2			
Capacity, Std.	Input	up to 650 sheets	Output	up to 500 sheets
Media type and capacity tray 1	Paper: 100 sheets of 75 g/m ² media; Envelopes: 10			
Paper handling standard	input	550-sheet input tray, 100-sheet multi-purpose tray	output	Up to 500 sheets
Product short name	6800			
Typical Electricity Consumption (TEC) number	0.709 kWh/week (ENERGY STAR 3.0); 0.659 kWh/week (Blue Angel)			
Number of simultaneous users (local + network)	10-30 users			
Scan resolution	Hardware	Up to 600 x 600 dpi	Optical	Up to 600 dpi
	Enhanced	Up to 600 dpi		
Scan speed (normal, A4)	Up to 95 ppm/190 ipm (b&w), up to 95 ppm/190 ipm (color)			
Automatic Document Feeder Capacity	Standard, 150 sheets			
Color scanning	Yes			
Grayscale levels	256			
Scan input modes	Front panel applications: Copy, Fax; Scan to Email; Scan to Network Folder; Scan to USB; Scan to Job Storage; Open Extensibility Platform (OXP); HP Workpath applications			
Scan size maximum	ADF, metric	215.9 x 863.6 mm	ADF, Imperial	8.5 x 34.0 in
	Flatbed, metric	216 x 356 mm	Flatbed, imperial	8.5 x 14 in
Scan size minimum	ADF, metric	68 x 127 mm	ADF, imperial	2.7 x 5 in
Bit depth	24-bit			

HP Color LaserJet Enterprise Flow MFP 6800zf technical specifications

TWAIN Version	Version 2.4			
Scan file format	PDF; Hi-Compression PDF; PDF/A; JPEG; TIFF; MTIFF; XPS			
Scan type	Flatbed; ADF			
Security management	Identity management: Kerberos authentication; LDAP authentication; 1,000-user pin codes; optional HP and 3 rd party advanced authentication solutions (e.g. badge readers); Network: IPsec/firewall with certificate; Pre-shared key; Supports WJA-10 IPsec configuration Plug-in; 802.1X authentication (EAP-PEAP; EAP-TLS); SNMPv3; HTTPS; Certificates; Access Control List; Data: Storage encryption; Encrypted PDF & Email (uses FIPS 140 validated cryptographic libraries from Microsoft); Secure Erase; SSL/TLS (HTTPS); Encrypted credentials; Device: Security lock slot; USB port disablement; hardware integration pocket for security solutions; Intrusion Detection with Red Balloon Security technology - constant in-device monitoring for attacks; SureStart Secure Boot - BIOS Integrity Checking with self-healing capability; Whitelisting - loads only known good code (DLLs, EXEs, ...); Security management: Compatible with Device Security Syslog Messages processed and accessible in Arcsight and Splunk SIEMs			
Services (Care Pack)	U45SXE - HP 3-year Next Business Day with DMR Service for Color LaserJet Enterprise MFP 6800; U45SYE - HP 4-year Next Business Day with DMR Service for Color LaserJet Enterprise MFP 6800; U45SZE - HP 5-year Next Business Day with DMR Service for Color LaserJet Enterprise MFP 6800; U45T0E - HP 3-year 4-hour 9x5 with DMR Service for Color LaserJet Enterprise MFP 6800; U45T1E - HP 4-year 4-hour 9x5 with DMR Service for Color LaserJet Enterprise MFP 6800; U45T2E - HP 5-year 4-hour 9x5 with DMR Service for Color LaserJet Enterprise MFP 6800; U45T3E - HP 3-year Next Business Day Call-to-Repair with DMR Service for Color LaserJet Enterprise MFP 6800; U45T4E - HP 4-year Next Business Day Call-to-Repair with DMR Service for Color LaserJet Enterprise MFP 6800; U45T5E - HP 5-year Next Business Day Call-to-Repair with DMR Service for Color LaserJet Enterprise MFP 6800; U45T6E - HP 3-year Channel Parts Exchange with DMR Service for Color LaserJet Enterprise MFP 6800; U45T7E - HP 4-year Channel Parts Exchange with DMR Service for Color LaserJet Enterprise MFP 6800; U45T8E - HP 5-year Channel Parts Exchange with DMR Service for Color LaserJet Enterprise MFP 6800; U45T9PE - HP 1-year Post Warranty Next Business Day with DMR Service for Color LaserJet Enterprise MFP 6800; U45TBPE - HP 2-year Post Warranty Next Business Day with DMR Service for Color LaserJet Enterprise MFP 6800; U45TCPE - HP 1-year Post Warranty 4-hour 9x5 with DMR Service for Color LaserJet Enterprise MFP 6800; U45TDPE - HP 2-year Post Warranty 4-hour 9x5 with DMR Service for Color LaserJet Enterprise MFP 6800; U45TFPE - HP 1-year PW NBD Call-to-Repair with DMR Service for Color LaserJet Enterprise MFP 6800; U45TGPE - HP 2-year PW NBD Call-to-Repair with DMR Service for Color LaserJet Enterprise MFP 6800; U45THPE - HP 1-year PW Channel Parts Exchange with DMR Service for Color LaserJet Enterprise MFP 6800; U45TJPE - HP 2-year PW Channel Parts Exchange with DMR Service for Color LaserJet Enterprise MFP 6800; U9JT2E - HP Installation Service with network configuration for workgroup printer (1 unit); U45VXE - HP Maintenance Kit Replacement Service for Color LaserJet Enterprise MFP 6800x Fuser 110 Enhanced; U45VYE - HP Maintenance Kit Replacement Service for Color LaserJet Enterprise MFP 6800x Fuser 220 Enhanced; U45VZE - HP Maintenance Kit Replacement Service for Color LaserJet Enterprise MFP 6800x ITB; U45W0E - HP Maintenance Kit Replacement Service for Color LaserJet Enterprise MFP 6800x ITB Kit; U45W1E - HP Maintenance Kit Replacement Service for Color LaserJet Enterprise MFP 6800x X677xx TCU; U45W2E - HP Maintenance Kit Replacement Service for Color LaserJet Enterprise MFP 6800x X677xx MP Tray Roller; U45W3E - HP Maintenance Kit Replacement Service for Color LaserJet Enterprise MFP 6800x X677xx Tray 2 Roller			
Mac compatible	Yes			
Software included	No software solutions are included in the box, only on http://hp.com http://123.hp.com ;			
Media types	Paper (plain, light, intermediate, light bond, bond, recycled, mid-weight, heavy, mid-weight glossy, heavy glossy, extra heavy, extra heavy glossy, cardstock, card glossy), color transparency, labels, letterhead, envelope, pre-printed, pre-punched, colored, rough, opaque film, user-defined			
Standard media sizes supported	Metric	Tray 1: A4, A5, A6, RA4, B5, B6, 16k, 10 x 15 cm, Oficio, postcards (JIS single and double), envelopes (DL, C5, B5, C6); Tray 2, optional 1x550-sheet feeders: A4, A5, A6, RA4, B5, B6, 10 x 15 cm, Oficio, 16k, Dpostcard (JIS); optional 2,100-sheet high-capacity feeder: A4; A5 (with optional accessory)	Imperial	Tray 1: Letter, Legal, Executive, Statement, Oficio, 3 x 5 in, 4 x 6 in, 5 x 7 in, 5 x 8 in, envelopes (No. 9, No. 10, Monarch); Tray 2, optional 1x550-sheet feeders: Letter, Legal, Executive, Statement, Oficio, 4 x 6 in, 5 x 7 in, 5 x 8 in; optional 2,100-sheet high-capacity feeder: letter, legal; statement (with optional accessory)
Media sizes custom	Metric	Tray 1: 64 x 127 to 216 x 1200 mm; Tray 2, optional 1x550-sheet feeders: 101 x 148 to 216 x 356 mm; optional 2,100-sheet high-capacity feeder: custom sizes not supported in this tray	Imperial	Tray 1: 2.52 x 5 to 8.5 x 47.24 in; Tray 2, optional 1x550-sheet feeders: 4 x 5.83 to 8.5 x 14 in; optional 2,100-sheet high-capacity feeder: custom sizes not supported in this tray
Media size, tray 1 (metric)	A4, A5, A6, RA4, B5, B6, 10 x 15 cm, Oficio 216 x 340, 16k, Postcard (JIS), DPostcard (JIS), Envelopes (DL, C5, B5, C6); custom 64 x 127 to 216 x 1200 mm			
Media weights supported, by paper path	Metric	Tray 1: 60 to 220 g/m ² (plain), 120 to 220 g/m ² (glossy); Tray 2: 60 to 220 g/m ² (plain), 120 to 220 g/m ² (glossy); Optional 550-sheet input trays: 60 to 220 g/m ² (plain), 120 to 220 g/m ² (glossy); Optional 2,100-sheet high-capacity input: 60 to 220 g/m ² (plain)	Imperial	Tray 1: 16 to 58 lb (plain), 32 to 58 lb (glossy); Tray 2: 16 to 58 lb (plain), 32 to 58 lb (glossy); Optional 550-sheet input trays: 16 to 58 lb (plain), 32 to 58 lb (glossy); Optional 2,100-sheet high-capacity input: 16 to 58 lb (plain)
Media weights supported, tray 1, (metric)	60 to 220 g/m ² (plain), 120 to 220 g/m ² (glossy)			
Media size, ADF	Legal; Oficio; Executive; Statement: 16k; A4; RA4; A5; A6; B5; B6 (JIS); Postcard (JIS); 4 x 6 in; 5 x 7 in; 5 x 8 in; 68 x 147 mm to 215.9 x 863.6 mm; 2.68 x 5.79 in to 8.46 x 34 in			
Media weights supported, ADF	Metric	45 to 199 g/m ²	Imperial	12 to 53 lb
Key media sizes supported	Metric	A4	Imperial	Letter; Legal
Control panel	10.1-in touchscreen with color graphics			
System requirements	Macintosh, Minimum	2 GB available hard drive space; Internet connection; or USB port; Internet browser. For additional OS hardware requirements see apple.com	Minimum	2 GB available hard disk space; Internet connection; or USB port; Internet browser. For additional OS hardware requirements see microsoft.com
Manufacturer warranty	One-year Next Business Day Onsite Warranty. Warranty and support options vary by product, country and local legal requirements. Go to http://hp.com/support to learn about HP award winning service and support options in your region.			
Weight	Metric	42.20 kg	Imperial	92.84 lb
Package Weight	Metric	46.20 kg	Imperial	101.64 lb

HP Color LaserJet Enterprise Flow MFP 6800zfsw technical specifications

Processor speed	1.6 GHz			
Orderable supplies	HP LaserJet Toner Collection Unit 527F9A; HP LaserJet 110V Enhanced Fuser Kit 527G2A; HP LaserJet 220V Enhanced Fuser Kit 527G3A; HP LaserJet Image Transfer Belt 527G8A; HP LaserJet Image Transfer Belt Kit 527G9A; HP LaserJet Tray 2 Roller Kit 527H2A; HP LaserJet MP Tray Roller Kit 527H3A; HP LaserJet ADF Maintenance Kit 6H122A; HP LaserJet ADF Flow Maintenance Kit 6MIP3A; HP Staple Cartridge Refill (5,000 staples) J8J96A			
Printer smart software features	Apple AirPrint™, Mopria-certified, Open Extensibility Platform, FutureSmart firmware, Instant-on Technology, HP Auto-On/Auto-Off technology, Easy-access USB, Two-sided printing, Hardware Integration Pocket, Intuitive 10.1-in touchscreen control panel, print multiple pages per sheet (2, 4, 6, 9, 16), collation, watermarks, store print jobs, print preview			
Power consumption description	717 watts (printing/copying), 63.4 watts (Ready), 1.1 watts (Sleep), 0.1 watts (Auto off/Manual on), 0.1 watts (Manual off)			
Power supply	Type	Built in 110V or 220V power supply (not dual voltage, power supply varies by part number with option code identifier)	Required	Input voltage: 100V to 127V nominal (+/-10%), 50 - 60 Hz nominal (+/- 3 Hz), 12A; Input voltage: 220V to 240V nominal, (+/-10%) 50 - 60 Hz nominal (+/- 3 Hz), 6A
What is in the box	HP Color LaserJet Multi-function Printer; HP Black Original LaserJet Toner Cartridge (~9,000 yield), HP Cyan, Magenta and Yellow Original LaserJet Toner Cartridges (~6,000 yield each) (toner cartridges installed), Documentation (Hardware Installation Guide); Power cord			
Replacement cartridges²	HP 213A Black Original LaserJet Toner Cartridge (~3,500 pages) W2130A; HP 213A Cyan Original LaserJet Toner Cartridge (~3,000 pages) W2131A; HP 213A Yellow Original LaserJet Toner Cartridge (~3,000 pages) W2132A; HP 213A Magenta Original LaserJet Toner Cartridge (~3,000 pages) W2133A; HP 213X High Yield Black Original LaserJet Toner Cartridge (~9,000 pages) W2130X; HP 213X High Yield Cyan Original LaserJet Toner Cartridge (~6,000 pages) W2131X; HP 213X High Yield Yellow Original LaserJet Toner Cartridge (~6,000 pages) W2132X; HP 213X High Yield Magenta Original LaserJet Toner Cartridge (~6,000 pages) W2133X; HP 213Y Extra High Yield Black Original LaserJet Toner Cartridge (~18,000 pages) W2130Y; HP 213Y Extra High Yield Cyan Original LaserJet Toner Cartridge (~12,000 pages) W2131Y; HP 213Y Extra High Yield Yellow Original LaserJet Toner Cartridge (~12,000 pages) W2132Y; HP 213Y Extra High Yield Magenta Original LaserJet Toner Cartridge (~12,000 pages) W2133Y; HP 217Z Ultra Yield Black Original LaserJet Toner Cartridge (~32,000 pages) W2170Z; HP 217Z Ultra Yield Cyan Original LaserJet Toner Cartridge (~24,000 pages) W2171Z; HP 217Z Ultra Yield Yellow Original LaserJet Toner Cartridge (~24,000 pages) W2172Z; HP 217Z Ultra Yield Magenta Original LaserJet Toner Cartridge (~24,000 pages) W2173Z			
Supplies feature	TerraJet Cartridge			
Electromagnetic emission standard	CISPR 22:2008 (International) Class A, CISPR 32:2015 (International) Class A / EN 55032:2015 Class A + A1:2020, CISPR 35:2016 (International) / EN 55035:2017 + A1:2020, EN IEC 61000-3-2:2019, EN 61000-3-3:2013 + A1:2019 + A2:2021, FCC 47 CFR Part 15 Class A, ICES-003, Issue 7 Class A. Other EMC approvals as required by individual countries.			
Safety Approvals and Requirements	IEC 60950-1:2005 + A1:2009 + A2:2013 (International); IEC 62368-1:2014; EN 62368-1:2014 (EU); EN 60825-1:2014/IEC 60825-1:2014 (Class 1 Laser Product); EN 62479:2010/IEC 62479:2010; IEC 62471:2006 / EN 62471:2008; Low Voltage Directive 2014/35/EU with CE Mark (Europe); GS Certificate (Germany, Europe); UL/cUL Listed and UC CoC (US/Canada); UL 62368-1 2nd Ed. 2014-12-01, CSA C22.2 No. 62368-1-14, 2nd Ed.; Compliance with laser safety standards 21 CFR 1040.10 and 1040.11 except for deviations pursuant to Laser Notice No. 56, dated May 8, 2019; Other safety approvals as required by individual countries.			
ENERGY STAR® certified	Yes			
Ecolabels	CECP; IT ECO Declaration; Blue Angel; EPEAT® registered; SEPA; KOECO			
Blue Angel compliance	Yes, Blue Angel DE-UZ 219—only ensured when using Original HP supplies			
Sustainable impact specifications	15% post-consumer recycled plastic; ENERGY STAR® certified; EPEAT® registered			
Network capabilities	Yes, via HP Jetdirect Ethernet embedded print server (standard) which supports: 10Base-T, 100Base-Tx, 1000Base-T; 802.3az (EEE) support on Fast Ethernet and Gig Links; IPsec (standard); 802.11a/b/g/n wireless networking.			
Supported Network Protocols	Via built-in networking solution: TCP/IP, IPv4, IPv6; Print: TCP-IP port 9100 Direct Mode, LPD (raw queue support only), Web Services printing, IPP 2.0, Apple AirPrint™, FTP Print, Google Cloud Print; Discovery: SLP, Bonjour, Web Services Discovery; IP Config: IPv4 (Boot), DHCP, AutoIP, Manual, TFTP Config, ARP-Ping), IPv6 (Stateless Link-Local and via Router, Statefull via DHCPv6); Management: SNMPv2/v3, HTTP/HTTPS, Telnet, TFTP Config, FTP FW Download, Syslog; Security: SNMPv3, SSL Cert Management, Firewall, ACL, 802.1x			
Mobile printing capability	Apple AirPrint™; Mopria™ certified; NFC touch-to-print (optional)			
Connectivity, Std.	1 Fax; 1 Gigabit Ethernet 10/100/1000T network; 1 Hardware Integration Pocket 2nd generation (HIP2); 1 Hi-Speed USB 2.0 (host); 1 SuperSpeed USB 3.0 (device); 1 SuperSpeed USB 3.0 (host)			
Copier reduce/enlarge	25 to 400%			
Max. number of copies	Up to 9,999			
Copy Resolution	Black text	Up to 600 x 600 dpi	Color text and graphics	Up to 600 x 600 dpi
Copy speed (Black)	Normal A4	Up to 52 cpm	Normal, Letter	Up to 55 cpm
Copy speed (Color)	Normal A4	Up to 52 cpm	Normal, Letter	Up to 55 cpm
Digital sending standard features	Scan to Email; Scan to Network Folder; Scan to USB drive; Scan to SharePoint; Scan to FTP; Scan to SFTP; Scan to LAN Fax; Scan to Internet Fax; local address book; SMTP over SSL; automatically detect color/monochrome; high compression PDF; image adjustments (darkness, contrast, background cleanup, sharpness); optimize text/picture (text, mixed, printed picture, photograph); content orientation; Scan mode (book, 2-sided ID); erase edges; auto page crop; job build; image preview; blank page suppression; automatically straighten; embedded OCR; optimize text/picture (auto); Scan to multi-destination; automatic tone; auto orientation; multi-feed detection; Reverse and Retry; document editing; auto paper color removal; job separation (blank page, barcode); watermark; stamps			
Package dimensions	Metric	790x760x1354 mm	Imperial	3110x29.92x53.31 in
Max dimensions	Metric	870 x 823 x 1399 mm	Imperial	34.3 x 32.4 x 55.1 in
Product dimensions	Metric	520 x 528 x 1154 mm	Imperial	20.5 x 20.8 x 45.4 in
Display description	10.1-in Color Graphics Display (CGD) with touchscreen; Rotating (adjustable angle) display			
Acoustic power emissions (active, printing)	6.6 B(A)			
Acoustic pressure emissions bystander (ready)	18 dB(A)			
Operating humidity range	10 to 80% RH			

HP Color LaserJet Enterprise Flow MFP 6800zfsw technical specifications

Operating humidity range (recommended)	30 to 70% RH			
Operating temperature range	Celsius	10 to 32.5°C	Fahrenheit	50 to 91°F
	Recommended celsius	15 to 27°C	Recommended fahrenheit	59 to 80.6°F
Storage temperature range	Celsius	-20 to 40°C	Fahrenheit	-4 to 104°F
Fax	Yes			
Fax Speed (Letter)	3 sec per page			
Fax speed	Up to 33.6 kbps			
Memory	Standard	6 GB	Maximum	6 GB
	HP ImageREt 3600, Enhanced (600 x 600 dpi), Fine Lines (1200 x 1200 dpi), Quickview (300 x 300 dpi)			
Print resolution color (best)	Up to 1200 x 1200 dpi			
Print speed (Letter)	Print speed up to 55 ppm (black) and 55 ppm (color)			
Print speed (Black)	Normal, A4	Up to 52 ppm	Normal, Letter	Up to 55 ppm
Print speed (Color)	Normal, A4	Up to 52 ppm	Normal, Letter	Up to 55 ppm
First page out (Black)	A4, ready	As fast as 6.5 sec	Letter, ready	As fast as 6.4 sec
First page out (Color)	A4, ready	As fast as 7.4 sec	Letter, ready	As fast as 7.3 sec
Duty cycle	Monthly, A4	Up to 100,000 pages	Monthly, letter	Up to 100,000 pages
Recommended monthly page volume	2,000 to 14,000			
Fonts and typefaces	105 internal TrueType fonts scalable in HP PCL, 92 internal scalable fonts in HP postscript level 3 emulation (Euro symbol built-in); 1 internal Unicode fonts (Andale Mono World Type); 2 internal Windows Vista 8 fonts (Calibri, Cambria); additional font solutions available via third-party flash memory cards; HP LaserJet Fonts and IPDS Emulation available at http://www.hp.com/go/laserjetfonts			
Hard disk	Standard, minimum 500GB HDD; Optional, 256 GB SSD (via CTO)			
Print languages, standard	HP PCL 6; HP PCL 5c; HP postscript level 3 emulation, native PDF printing (v 1.7), URF (AirPrint)			
Printer management	HP Web Jetadmin; Embedded Web Server; HP Security Manager; HP Insights; HP Advance; HP Command Center; HP Smart Device Services (SDS)			
Top key features	Flow; Touchscreen; Stapling; TerraJet Cartridge			
Target number of users and print volume	For teams over 25 users; Prints up to 14,000 pages/month			
AIO functions	Print, copy, scan, fax			
Duplex print options	Automatic			
Print technology	Laser			
Paper trays, standard	4			
Capacity, Std.	Input	up to 1750 sheets	Output	Up to 1000 sheets
Media type and capacity tray 1	Paper: 100 sheets of 75 g/m ² media; Envelopes: 10			
Paper handling standard	Input	3x 550-sheet input trays, 100-sheet multi-purpose tray	Output	Up to 1000 sheets
Product short name	6800			
Typical Electricity Consumption (TEC) number	0.709 kWh/week (ENERGY STAR 3.0); 0.659 kWh/week (Blue Angel)			
Number of simultaneous users (local + network)	10-30 users			
Scan resolution	Hardware	Up to 600 x 600 dpi	Optical	Up to 600 dpi
	Enhanced	Up to 600 dpi		
Scan speed (normal, A4)	Up to 95 ppm/190 ipm (b&w), up to 95 ppm/190 ipm (color)			
Automatic Document Feeder Capacity	Standard, 150 sheets			
Color scanning	Yes			
Grayscale levels	256			
Scan input modes	Front panel applications: Copy; Fax; Scan to Email; Scan to Network Folder; Scan to USB; Scan to Job Storage; Open Extensibility Platform (EXP); HP Workpath applications			
Scan size maximum	(ADF, metric)	215.9 x 863.6 mm	(ADF, imperial)	8.5 x 34.0 in
	(flatbed, metric)	216 x 356 mm	(flatbed, imperial)	8.5 x 14 in

HP Color LaserJet Enterprise Flow MFP 6800zfw+ technical specifications

Processor speed	1.6 GHz			
Orderable supplies ¹³	HP LaserJet Toner Collection Unit 527F9A; HP LaserJet 110V Enhanced Fuser Kit 527G2A; HP LaserJet 220V Enhanced Fuser Kit 527G3A; HP LaserJet Image Transfer Belt 527G8A; HP LaserJet Image Transfer Belt Kit 527G9A; HP LaserJet Tray 2 Roller Kit 527H2A; HP LaserJet MP Tray Roller Kit 527H3A; HP LaserJet ADF Maintenance Kit 6H122A; HP LaserJet ADF Flow Maintenance Kit 6MIP3A; HP Staple Cartridge Refill (5,000 staples) J8J96A; HP Staple Cartridge Pack (3,000 staples) Q7432A			
Printer smart software features	Apple AirPrint™, Mopria-certified, Open Extensibility Platform, Future Smart firmware, Instant-on Technology, HP Auto-On/Auto-Off technology, Easy-access USB, Two-sided printing, Hardware Integration Pocket, Intuitive 10.1-in touchscreen control panel, print multiple pages per sheet (2, 4, 6, 9, 16), collation, watermarks, store print jobs, print preview			
Power consumption description	717 watts (printing/copying), 63.4 watts (Ready), 1.1 watts (Sleep), 0.1 watts (Auto off/Manual on), 0.1 watts (Manual off)			
Power supply	Type	Built in 110V or 220V power supply (not dual voltage, power supply varies by part number with option code identifier)	Required	Input voltage: 100V to 127V nominal (+/-10%), 50 - 60 Hz nominal (+/- 3 Hz), 12A; Input voltage: 220V to 240V nominal, (+/-10%) 50 - 60 Hz nominal (+/- 3 Hz), 6A
What is in the box	HP Color LaserJet Multi-function Printer; HP Black Original LaserJet Toner Cartridge (~9,000 yield), HP Cyan, Magenta, and Yellow Original LaserJet Toner Cartridges (~6,000 yield each) (toner cartridges installed); Documentation (Hardware Installation Guide); Power cord			
Replacement cartridges ²	HP 213A Black Original LaserJet Toner Cartridge (~3,500 pages) W2130A; HP 213A Cyan Original LaserJet Toner Cartridge (~3,000 pages) W2131A; HP 213A Yellow Original LaserJet Toner Cartridge (~3,000 pages) W2132A; HP 213A Magenta Original LaserJet Toner Cartridge (~3,000 pages) W2133A; HP 213X High Yield Black Original LaserJet Toner Cartridge (~9,000 pages) W2130X; HP 213X High Yield Cyan Original LaserJet Toner Cartridge (~6,000 pages) W2131X; HP 213X High Yield Yellow Original LaserJet Toner Cartridge (~6,000 pages) W2132X; HP 213X High Yield Magenta Original LaserJet Toner Cartridge (~6,000 pages) W2133X; HP 213Y Extra High Yield Black Original LaserJet Toner Cartridge (~18,000 pages) W2130Y; HP 213Y Extra High Yield Cyan Original LaserJet Toner Cartridge (~12,000 pages) W2131Y; HP 213Y Extra High Yield Yellow Original LaserJet Toner Cartridge (~12,000 pages) W2132Y; HP 213Y Extra High Yield Magenta Original LaserJet Toner Cartridge (~12,000 pages) W2133Y; HP 217Z Ultra Yield Black Original LaserJet Toner Cartridge (~32,000 pages) W2170Z; HP 217Z Ultra Yield Cyan Original LaserJet Toner Cartridge (~24,000 pages) W2171Z; HP 217Z Ultra Yield Yellow Original LaserJet Toner Cartridge (~24,000 pages) W2172Z; HP 217Z Ultra Yield Magenta Original LaserJet Toner Cartridge (~24,000 pages) W2173Z			
Supplies feature	TerraJet Cartridge			
Electromagnetic emission standard	CISPR 22:2008 (International) Class A, CISPR 32:2015 (International) Class A / EN 55032:2015 Class A + A1:2020, CISPR 35:2016 (International) / EN 55035:2017 + A1:2020, EN IEC 61000-3-2:2019, EN 61000-3-3:2013 + A1:2019 + A2:2021, FCC 47 CFR Part 15 Class A, ICES-003, Issue 7 Class A. Other EMC approvals as required by individual countries.			
Safety Approvals and Requirements	IEC 60950-1:2005 + A1:2009 + A2:2013 (International); IEC 62368-1:2014; EN 62368-1:2014 (EU); EN 60825-1:2014/IEC 60825-1:2014 (Class 1 Laser Product); EN 62479:2010/IEC 62479:2010; IEC 62471:2006 / EN 62471:2008; Low Voltage Directive 2014/35/EU with CE Mark (Europe); GS Certificate (Germany, Europe); UL/cUL Listed and UC CoC (US/Canada); UL62368-1 2nd Ed. 2014-12-01, CSA C22.2 No. 62368-1:14, 2nd Ed.; Compliance with laser safety standards 21 CFR 1040.10 and 1040.11 except for deviations pursuant to Laser Notice No. 56, dated May 8, 2019; Other safety approvals as required by individual countries.			
ENERGY STAR® certified	Yes			
Ecolabels	CECP; Blue Angel; IT ECO Declaration; EPEAT® Gold registered; SEPA; KOECO			
Blue Angel compliance	Yes, Blue Angel DE-UZ 219—only ensured when using Original HP supplies			
Sustainable impact specification	15% post-consumer recycled plastic; ENERGY STAR® certified; EPEAT® registered			
Network capabilities	Yes, via HP Jetdirect Ethernet embedded print server (standard) which supports: 10Base-T, 100Base-Tx, 1000Base-T; 802.3az (EEE) support on Fast Ethernet and Gig Links; IPsec (standard); 802.11a/b/g/n wireless networking.			
Supported network protocols	Via built-in networking solution: TCP/IP, IPv4, IPv6; Print: TCP-IP port 9100 Direct Mode, LPD (raw queue support only), Web Services printing, IPP 2.0, Apple AirPrint™, FTP Print, Google Cloud Print; Discovery: SLP, Bonjour, Web Services Discovery; IP Config: IPv4 (BootP, DHCP, AutoIP, Manual, TFTP Config, ARP-Ping), IPv6 (Stateless Link-Local and via Router, Stateless via DHCPv6); Management: SNMPv2/v3, HTTP/HTTPS, Telnet, TFTP Config, FTP FW Download, Syslog; Security: SNMPv3, SSL Cert Management, Firewall, ACL, 802.1x			
Mobile printing capability	Apple AirPrint™; Mopria™ certified; NFC touch-to-print (optional)			
Connectivity, std.	1 Fax; 1 Gigabit Ethernet 10/100/1000T network; 1 Hardware Integration Pocket 2nd generation (HIP2); 1 Hi-Speed USB 2.0 (host); 1 SuperSpeed USB 3.0 (device); 1 SuperSpeed USB 3.0 (host)			
Copier reduce/enlarge	25 to 400%			
Max. number of copies	Up to 9,999			
Copy resolution	Black text	Up to 600 x 600 dpi	Color text and graphics	Up to 600 x 600 dpi
Copy speed (Black)	Normal, A4	Up to 52 cpm	Normal, Letter	Up to 55 cpm
Copy speed (Color)	Normal, A4	Up to 52 cpm	Normal, Letter	Up to 55 cpm
Digital sending standard features	Scan to Email; Scan to Network Folder; Scan to USB drive; scan to SharePoint; Scan to FTP; Scan to SFTP; Scan to LAN Fax; Scan to Internet Fax; local address book; SMTP over SSL; automatically detect color/monochrome; high compression PDF; image adjustments (darkness, contrast, background clean-up, sharpness); optimize text/picture (text, mixed, printed picture, photograph); content orientation; scan mode (book, 2-sided ID); erase edges; auto page crop; job build; image preview; blank page suppression; automatically straighten; embedded OCR; optimize text/picture (auto); scan to multi-destination; automatic tone; auto orientation; multi-feed detection; Reverse and Retry; document editing; auto paper color removal; job separation (blank page, barcode); watermark; stamps			
Package dimensions	Metric	790x760x1339 mm	Imperial	3110x29.92x52.72 in
Max. dimensions	Metric	1552 x 939 x 1383 mm	Imperial	611 x 37.0 x 54.4 in
Product dimensions	Metric	1202 x 559 x 1147 mm	Imperial	47.3 x 22.0 x 45.2 in
Display description	10.1-in Color Graphics Display (CGD) with touchscreen; Rotating (adjustable angle) display			
Acoustic power emissions (active, printing)	6.7 B(A)			
Acoustic pressure emissions bystander (ready)	19 dB(A)			
Operating humidity range	10 to 80% RH			

HP Color LaserJet Enterprise Flow MFP 6800zfw+ technical specifications

Operating humidity range (recommended)	30 to 70% RH			
Operating Temperature Range	Celsius	10 to 32.5°C	Fahrenheit	50 to 91°F
	Recommended celsius	15 to 27°C	Recommended fahrenheit	59 to 80.6°F
Storage temperature range	Celsius	-20 to 40°C	Fahrenheit	-4 to 104°F
Fax	Yes			
Fax speed (Letter)	3 sec per page			
Fax speed	Up to 33.6 kbps			
Memory	Standard	6 GB	Maximum	6 GB
	HP ImageREt 3600, Enhanced (600 x 600 dpi), Fine Lines (1200 x 1200 dpi), Quickview (300 x 300 dpi)			
Print resolution color (best)	Up to 1200 x 1200 dpi			
Print speed (Black)	Normal, A4	Up to 52 ppm	Normal, Letter	Up to 55 ppm
Print Speed Color	Normal, A4	Up to 52 ppm	Normal, Letter	Up to 55 ppm
Print speed (Letter)	Up to 55 ppm (black) and 55 ppm (color)			
First page out (Black)	A4, ready	As fast as 8.8 sec	Letter, ready	As fast as 8.7 sec
First page out (Color)	A4, ready	As fast as 9.2 sec	Letter, ready	As fast as 9.1 sec
Duty Cycle	Monthly, A4	Up to 100,000 pages	Monthly, Letter	Up to 100,000 pages
Recommended monthly page volume	2,000 to 14,000			
Fonts and typefaces	105 internal TrueType fonts scalable in HP PCL, 92 internal scalable fonts in HP postscript level 3 emulation (Euro symbol built-in); 1 internal Unicode fonts (Andale Mono World Type); 2 Internal Windows Vista 8 fonts (Calibri, Cambria); additional font solutions available via third-party flash memory cards; HP LaserJet Fonts and IPDS Emulation available at http://www.hp.com/go/laserjetfonts			
Hard disk	Standard, minimum 500GB HDD; Optional, 256 GB SSD (via CTO)			
Print languages, standard	HP PCL 6; HP PCL 5c; HP postscript level 3 emulation, native PDF printing (v 1.7), URF (AirPrint)			
Printer management	HP Web Jetadmin; Embedded Web Server; HP Security Manager; HP Insights; HP Advance; HP Command Center; HP Smart Device Services (SDS)			
Top key features	Flow; Touchscreen; Stapling; TerraJet Cartridge			
Target number of users and print volume	For teams over 25 users; Prints up to 14,000 pages/month			
AIO functions	Print, copy, scan, fax			
Duplex print options	Automatic			
Print technology	Laser			
Paper trays, standard	4			
Capacity, Std.	Input	up to 3300 sheets	Output	up to 3300 sheets
Media type and capacity tray 1	Paper: 100 sheets of 75 g/m ² media; Envelopes: 10			
Paper handling standard	Input	100-sheet multi-purpose tray, 2x550-sheet input trays, 2,100-sheet high capacity input	Output	Up to 3300 sheets
Product short name	6800			
Typical Electricity Consumption (TEC) number	0.709 kWh/week (ENERGY STAR 3.0); 0.659 kWh/week (Blue Angel)			
Number of simultaneous users (local + network)	10-30 users			
Scan resolution	Hardware	Up to 600 x 600 dpi	Optical	Up to 600 dpi
	Enhanced	Up to 600 dpi		
Scan speed (normal, A4)	Up to 95 ppm/190 ipm (b&w), up to 95 ppm/190 ipm (color)			
Automatic Document Feeder Capacity	Standard, 150 sheets			
Color scanning	Yes			
Grayscale levels	256			
Scan input modes	Front panel applications: Copy; Fax; Scan to Email; Scan to Network Folder; Scan to USB; Scan to Job Storage; Open Extensibility Platform (OXP); HP Workpath applications			
Scan size maximum	ADF, metric	215.9 x 863.6 mm	ADF, imperial	8.5 x 34.0 in
	Flatbed, metric	216 x 356 mm	Flatbed, imperial	8.5 x 14 in

HP Color LaserJet Enterprise Flow MFP 6800zfw+ technical specifications

Scan size minimum	ADF, metric	68 x 127 mm	ADF, imperial	2.7 x 5 in
Bit depth	24-bit			
TWAIN Version	Version 2.4			
Scan file format	PDF; Hi-Compression PDF; PDF/A; JPEG; TIFF; MTIFF; XPS			
Scan type	Flatbed; ADF			
Security management	Identity management: Kerberos authentication; LDAP authentication; 1,000-user pin codes; optional HP and 3 rd party advanced authentication solutions (e.g. badge readers); Network: IPsec/firewall with certificate; Pre-shared key; Supports WJA-10 IPsec configuration Plug-in; 802.1X authentication (EAP-PEAP; EAP-TLS); SNMPv3; HTTPS; Certificates; Access Control List; Data: Storage encryption; Encrypted PDF & Email (uses FIPS 140 validated cryptographic libraries from Microsoft); Secure Erase; SSL/TLS (HTTPS); Encrypted credentials; Device: Security lock slot; USB port disablement; hardware integration pocket for security solutions; Intrusion Detection with Red Balloon Security technology - constant in-device monitoring for attacks; SureStart Secure Boot - BIOS Integrity Checking with self-healing capability; Whitelisting - loads only known good code (DLLs, EXEs...); Security management: Compatible with Device Security Syslog Messages processed and accessible in Arcsight and Splunk SIEMs			
Services (Care Pack)	U45SXE - HP 3-year Next Business Day with DMR Service for Color LaserJet Enterprise MFP 6800; U45SYE - HP 4-year Next Business Day with DMR Service for Color LaserJet Enterprise MFP 6800; U45SZE - HP 5-year Next Business Day with DMR Service for Color LaserJet Enterprise MFP 6800; U45TOE - HP 3-year 4-hour 9x5 with DMR Service for Color LaserJet Enterprise MFP 6800; U45TIE - HP 4-year 4-hour 9x5 with DMR Service for Color LaserJet Enterprise MFP 6800; U45T2E - HP 5-year 4-hour 9x5 with DMR Service for Color LaserJet Enterprise MFP 6800; U45T3E - HP 3-year Next Business Day Call-to-Repair with DMR Service for Color LaserJet Enterprise MFP 6800; U45T4E - HP 4-year Next Business Day Call-to-Repair with DMR Service for Color LaserJet Enterprise MFP 6800; U45T5E - HP 5-year Next Business Day Call-to-Repair with DMR Service for Color LaserJet Enterprise MFP 6800; U45T6E - HP 3-year Channel Parts Exchange with DMR Service for Color LaserJet Enterprise MFP 6800; U45T7E - HP 4-year Channel Parts Exchange with DMR Service for Color LaserJet Enterprise MFP 6800; U45T8E - HP 5-year Channel Parts Exchange with DMR Service for Color LaserJet Enterprise MFP 6800; U45T9E - HP 1-year Post Warranty Next Business Day with DMR Service for Color LaserJet Enterprise MFP 6800; U45TBPE - HP 2-year Post Warranty Next Business Day with DMR Service for Color LaserJet Enterprise MFP 6800; U45TCPE - HP 1-year Post Warranty 4-hour 9x5 with DMR Service for Color LaserJet Enterprise MFP 6800; U45TDPE - HP 2-year Post Warranty 4-hour 9x5 with DMR Service for Color LaserJet Enterprise MFP 6800; U45TFPE - HP 1-year PW NBD Call-to-Repair with DMR Service for Color LaserJet Enterprise MFP 6800; U45TGPE - HP 2-year PW NBD Call-to-Repair with DMR Service for Color LaserJet Enterprise MFP 6800; U45THPE - HP 1-year PW Channel Parts Exchange with DMR Service for Color LaserJet Enterprise MFP 6800; U45TJPE - HP 2-year PW Channel Parts Exchange with DMR Service for Color LaserJet Enterprise MFP 6800; U45VZE - HP Installation Service with network configuration for workgroup printer (1 unit); U45VXE - HP Maintenance Kit Replacement Service for Color LaserJet Enterprise MFP 6800 Fuser 110 Enhanced; U45VYE - HP Maintenance Kit Replacement Service for Color LaserJet Enterprise MFP 6800 Fuser 220 Enhanced; U45VZE - HP Maintenance Kit Replacement Service for Color LaserJet Enterprise MFP 6800 ITB; U45W0E - HP Maintenance Kit Replacement Service for Color LaserJet Enterprise MFP 6800 ITB Kit; U45W1E - HP Maintenance Kit Replacement Service for Color LaserJet Enterprise MFP 6800 X677xx TCU; U45W2E - HP Maintenance Kit Replacement Service for Color LaserJet Enterprise MFP 6800 X677xx MP Tray Roller; U45W3E - HP Maintenance Kit Replacement Service for Color LaserJet Enterprise MFP 6800 X677xx Tray 2 Roller			
Mac compatible	Yes			
Software included	No software solutions are included in the box, only on http://hp.com http://123.hp.com			
Media types	Paper (plain, light, intermediate, light bond, bond, recycled, mid-weight, heavy, mid-weight glossy, heavy glossy, extra heavy, extra heavy glossy, cardstock, card glossy), color transparency, labels, letterhead, envelope, pre-printed, pre-punched, colored, rough, opaque film, user-defined			
Standard media sizes supported	Metric	Tray 1: A4, A5, A6, RA4, B5, B6, 16k, 10 x 15 cm, Oficio, postcards (JIS single and double) envelopes (DL, C5, B5, C6); Tray 2, Tray 3 (1x550-sheet feeder): A4, A5, A6, RA4, B5, B6, 10 x 15 cm, Oficio, 16k, Dpostcard (JIS); Tray 4 (2,100-sheet high-capacity feeder): A4; A5 (with optional accessory)	Imperial	Tray 1: letter, legal, executive, statement, Oficio, 3 x 5 in, 4 x 6 in, 5 x 7 in, 5 x 8 in, envelopes (No. 9, No. 10, Monarch); Tray 2, Tray 3 (1x550-sheet feeder): letter, legal, executive, statement, Oficio, 4 x 6 in, 5 x 7 in, 5 x 8 in; Tray 4 (2,100-sheet high-capacity feeder): letter, legal; statement (with optional accessory)
Media sizes custom	Metric	Tray 1: 64 x 127 to 216 x 356 mm; Tray 2, Tray 3 (1x550-sheet feeder): 101 x 148 to 216 x 356 mm; Tray 4 (2,100-sheet high-capacity feeder): custom sizes not supported in this tray	Imperial	Tray 1: 2.52 x 5 to 8.5 x 14 in; Tray 2, Tray 3 (1x550-sheet feeder) 4 x 5.83 to 8.5 x 14 in; Tray 4 (2,100-sheet high-capacity feeder): custom sizes not supported in this tray
Media size, tray 1 (metric)	A4, A5, A6, RA4, B5, B6, 10 x 15 cm, Oficio 216 x 340, 16k, Postcard (JIS), DPostcard (JIS), Envelopes (DL, C5, B5, C6); custom 64 x 127 to 216 x 356 mm			
Media weights supported, by paper path	Metric	Tray 1: 60 to 220 g/m ² (plain), 120 to 220 g/m ² (glossy); Tray 2: 60 to 220 g/m ² (plain), 120 to 220 g/m ² (glossy); optional 550-sheet input trays: 60 to 220 g/m ² (plain), 120 to 220 g/m ² (glossy); optional 2,100-sheet high-capacity input: 60 to 220 g/m ² (plain)	Imperial	Tray 1: 16 to 58 lb (plain), 32 to 58 lb (glossy); Tray 2: 16 to 58 lb (plain), 32 to 58 lb (glossy); optional 550-sheet input trays: 16 to 58 lb (plain), 32 to 58 lb (glossy); optional 2,100-sheet high-capacity input: 16 to 58 lb (plain)
Media weights supported, tray 1, (metric)	60 to 220 g/m ² (plain), 120 to 220 g/m ² (glossy)			
Media size, ADF	Letter; Legal; Oficio; Executive; Statement; 16K; A4; RA4; A5; A6; B5; B6 (JIS); Postcard (JIS); DPostcard (JIS); 4 x 6 in; 5 x 7 in; 5 x 8 in; 68 x 147 mm to 215.9 x 863.6 mm; 2.68 x 5.79 in to 8.46 x 34 in			
Media weights supported, ADF	Metric	45 to 199 g/m ²	Imperial	12 to 53 lb
Key media sizes supported	Metric	A4	Imperial	Letter; Legal
Control panel	10.1-in touchscreen with color graphics			
System requirements	Macintosh, Minimum	2 GB available hard drive space; Internet connection; or USB port; Internet browser. For additional OS hardware requirements see apple.com	Minimum	2 GB available hard disk space; Internet connection; or USB port; Internet browser. For additional OS hardware requirements see microsoft.com
Manufacturer warranty	One-year Next Business Day Onsite Warranty. Warranty and support options vary by product, country and local legal requirements. Go to http://hp.com/support to learn about HP award-winning service and support options in your region.			
Weight	Metric	79.55 kg (engine + 632P1A)	Imperial	175.01 lb (engine + 632P1A)
Package weight	Metric	99.09 kg	Imperial	218.00 lb

HP Color LaserJet Enterprise Flow MFP 6801zfsw technical specifications

Processor speed	1.6 GHz			
Orderable supplies	HP LaserJet Toner Collection Unit 527F9A; HP LaserJet 110V Enhanced Fuser Kit 527G2A; HP LaserJet 220V Enhanced Fuser Kit 527G3A; HP LaserJet Image Transfer Belt 527G8A; HP LaserJet Image Transfer Belt Kit 527G9A; HP LaserJet Tray 2 Roller Kit 527H2A; HP LaserJet MP Tray Roller Kit 527H3A; HP LaserJet ADF Maintenance Kit 6H122A; HP LaserJet ADF Flow Maintenance Kit 6M1P3A; HP Staple Cartridge Refill (5,000 staples) J8J96A; HP Staple Cartridge Pack (3,000 staples) Q7432A			
Printer smart software features	Apple AirPrint™, Mopria-certified, Open Extensibility Platform, FutureSmart Firmware, Instant-on Technology, HP Auto-On/Auto-Off technology, Easy-access USB, Two-Sided Printing, Hardware Integration Pocket, Intuitive 10.1" touchscreen control panel, print multiple pages per sheet (2, 4, 6, 9, 16), collation, watermarks, store print jobs, print preview			
Power consumption description	717 watts (Printing/Copying), 63.4 watts (Ready), 1.1 watts (Sleep), 0.1 watts (Auto Off/Manual On), 0.1 watts (Manual Off)			
Power supply	Type	Built in 110V or 220V Power Supply (not dual voltage, power supply varies by part number with option code identifier)	Required	Input voltage: 100V to 127V nominal (+/-10%), 50 - 60 Hz nominal (+/- 3Hz), 12A; Input voltage: 220V to 240V nominal, (+/-10%) 50 - 60 Hz nominal (+/- 3Hz), 6A
What is in the box	HP Color LaserJet Multi-function Printer; HP Black Original LaserJet Toner Cartridge (~9,000 yield), HP Cyan, Magenta, and Yellow Original LaserJet Toner Cartridges (~6,000 yield each) (toner cartridges installed); Documentation (Hardware Installation Guide); Power cord			
Replacement cartridges ²	HP 213A Black Original LaserJet Toner Cartridge (~3,500 pages) W2130A; HP 213A Cyan Original LaserJet Toner Cartridge (~3,000 pages) W2131A; HP 213A Yellow Original LaserJet Toner Cartridge (~3,000 pages) W2132A; HP 213A Magenta Original LaserJet Toner Cartridge (~3,000 pages) W2133A; HP 213X High Yield Black Original LaserJet Toner Cartridge (~9,000 pages) W2130X; HP 213X High Yield Cyan Original LaserJet Toner Cartridge (~6,000 pages) W2131X; HP 213X High Yield Yellow Original LaserJet Toner Cartridge (~6,000 pages) W2132X; HP 213X High Yield Magenta Original LaserJet Toner Cartridge (~6,000 pages) W2133X; HP 213Y Extra High Yield Black Original LaserJet Toner Cartridge (~18,000 pages) W2130Y; HP 213Y Extra High Yield Cyan Original LaserJet Toner Cartridge (~12,000 pages) W2131Y; HP 213Y Extra High Yield Yellow Original LaserJet Toner Cartridge (~12,000 pages) W2132Y; HP 213Y Extra High Yield Magenta Original LaserJet Toner Cartridge (~12,000 pages) W2133Y; HP 217Z Ultra Yield Black Original LaserJet Toner Cartridge (~32,000 pages) W2170Z; HP 217Z Ultra Yield Cyan Original LaserJet Toner Cartridge (~24,000 pages) W2171Z; HP 217Z Ultra Yield Yellow Original LaserJet Toner Cartridge (~24,000 pages) W2172Z; HP 217Z Ultra Yield Magenta Original LaserJet Toner Cartridge (~24,000 pages) W2173Z			
Supplies feature	TerraJet Cartridge			
Electromagnetic emission standard	CISPR 22:2008 (International) Class A, CISPR 32:2015 (International) Class A / EN 55032:2015 Class A + A11:2020, CISPR 35:2016 (International) / EN 55035:2017 + A11:2020, EN IEC 61000-3-2:2019, EN 61000-3-3:2013 + A1:2019 + A2:2021, FCC 47 CFR Part 15 Class A, ICES-003, Issue 7 Class A. Other EMC approvals as required by individual countries.			
Safety Approvals and Requirements	IEC 60950-1:2005 + A1:2009 + A2:2013 (International); IEC 62368-1:2014; EN 62368-1:2014 (EU); EN 60825-1:2014 + A11:2021/IEC 60825-1:2014 (Class 1 Laser Product); EN 62479:2010/IEC 62479:2010; IEC 62471:2006 / EN 62471:2008; Low Voltage Directive 2014/35/EU with CE Mark (Europe); GS Certificate (Germany, Europe); UL/cUL Listed and UC CoC (US/Canada); UL62368-1 2 nd Ed. 2014-12-01, CSA C22.2 No. 62368-14, 2 nd Ed. Compliance with laser safety standards 21 CFR 1040.10 and 1040.11 except for deviations pursuant to Laser Notice No. 56, Dated May 8, 2019; Other safety approvals as required by individual countries.			
ENERGY STAR® certified	Yes			
Ecolabels	CECP; IT ECO Declaration; Blue Angel; EPEAT® Gold registered; SEPA; KOECO			
Blue Angel compliance	Yes, Blue Angel DE-UZ 219—only ensured when using Original HP supplies			
Sustainable impact specifications	15% post-consumer recycled plastic; ENERGY STAR® certified; EPEAT® registered			
Network capabilities	Yes, via HP Jetdirect Ethernet embedded print server (standard) which supports: 10Base-T, 100Base-Tx, 1000Base-T; 802.3az (EEE) support on Fast Ethernet and Gig Links; IPsec (standard); 802.11a/b/g/n wireless networking			
Wireless capability	Yes, wireless direct			
Supported network protocols	Via built-in networking solution: TCP/IP, IPv4, IPv6; Print: TCP-IP port 9100 Direct Mode, LPD (raw queue support only), Web Services printing, IPP 2.0, Apple AirPrint™, FTP Print, Google Cloud Print; Discovery: SLP, Bonjour, Web Services Discovery; IP Config: IPv4 (BootP, DHCP, AutoIP, Manual, TFTP Config, ARP-Ping), IPv6 (Stateless Link-Local and via Router, Statefull via DHCPv6); Management: SNMPv2/v3, HTTP/HTTPS, Telnet, TFTP Config, FTP FW Download, Syslog; Security: SNMPv3, SSL Cert Management, Firewall, ACL, 802.1x			
Mobile printing capability	Mopria™ certified; Apple AirPrint™; NFC touch-to-print (optional)			
Connectivity, Std.	1 Bluetooth Low Energy; 1 Fax; 1 Front USB port; 1 Gigabit Ethernet 10/100/1000T network; 1 Hardware Integration Pocket 2nd generation (HIP2); 1 SuperSpeed USB 3.0 (device); 1 SuperSpeed USB 3.0 (host); 1 Wi-Fi 802.11ac (dual band); 1 Wi-Fi Direct			
Copier reduce/enlarge	25 to 400%			
Max. number of copies	Up to 9,999 copies			
Copy resolution	Black text	Up to 600 x 600 dpi	Color text and graphics	Up to 600 x 600 dpi
Copy speed (Black)	Normal, A4	Up to 61 cpm	Normal, Letter	Up to 65 cpm
Copy speed (Color)	Normal, A4	Up to 61 cpm	Normal, Letter	Up to 65 cpm
Digital sending standard features	Scan to Email; Scan to Network Folder; Scan to USB drive; scan to SharePoint; Scan to FTP; Scan to SFTP; Scan to LAN Fax; Scan to Internet Fax; local address book; SMTP over SSL; automatically detect color/monochrome; high compression PDF; image adjustments (darkness, contrast, background clean-up, sharpness); optimize text/picture (text, mixed, printed picture, photograph); content orientation; scan mode (book, 2-sided ID); erase edges; auto page crop; job build; image preview; blank page suppression; automatically straighten; embedded OCR; optimize text/picture (auto); scan to multi-destination; automatic tone; auto orientation; multi-feed detection; Reverse and Retry; document editing; auto paper color removal; job separation (blank page, barcode); watermark; stamps			
Package dimensions	Metric	790 x 760 x 1354 mm	Imperial	31.10x29.92x53.31 in
Max dimensions	Metric	870 x 823 x 1399 mm	Imperial	34.3 x 32.4 x 55.1 in
Product dimensions	Metric	520 x 528 x 1154 mm	Imperial	20.5 x 20.8 x 45.4 in
Display description	10.1-in Color Graphic Display (CGD) with touchscreen; Rotating (adjustable angle)			
Acoustic power emissions (active, printing)	6.7 Bel(A)			
Acoustic pressure emissions bystander (ready)	19 dB(A)			

HP Color LaserJet Enterprise Flow MFP 6801zfsw technical specifications

Operating Humidity Range	10 to 80% RH			
Operating Humidity Range (recommended)	30 to 70% RH			
Operating temperature range	Celsius	10 to 32.5°C	Fahrenheit	50 to 91°F
	Recommended celsius	15 to 27°C	Recommended fahrenheit	59 to 80.6°F
Storage temperature range	Celsius	-20 to 40°C	Fahrenheit	-4 to 104°F
Fax	Yes			
Fax speed (Letter)	3 sec per page			
Fax speed	Up to 33.6 kbps			
Memory	Standard	6 GB	Maximum	6 GB
	HP ImageREt 3600, Enhanced (600 x 600 dpi), Fine Lines (1200 x 1200 dpi), Quickview (300 x 300 dpi)			
Print resolution color (best)	Up to 1200 x 1200 dpi			
Print speed (Black)	Normal, A4	Up to 61 ppm	Normal, Letter	Up to 65 ppm
Print speed (Color)	Normal, A4	Up to 61 ppm	Normal, Letter	Up to 65 ppm
Print speed (Letter)	Print speeds up to 65 ppm (black) and 65 ppm (color)			
First page out (Black)	A4, ready	As fast as 6.5 sec	Letter, ready	As fast as 6.4 sec
First page out (Color)	A4, ready	As fast as 7.1 sec	Letter, ready	As fast as 6.9 sec
Duty Cycle	(monthly, A4)	Up to 100,000 pages	Monthly, Letter	Up to 100,000 pages
Recommended monthly page volume	Up to 30,000 pages			
Fonts and typefaces	105 internal TrueType fonts scalable in HP PCL, 92 internal scalable fonts in HP postscript level 3 emulation (Euro symbol built-in); 1 internal Unicode fonts (Andale Mono World Type); 2 internal Windows Vista 8 fonts (Calibri, Cambria); additional font solutions available via third-party flash memory cards; HP LaserJet Fonts and IPDS Emulation available at http://www.hp.com/go/laserjetfonts			
Hard disk	Standard, minimum 500GB HDD; Optional, 256 GB SSD (via CTO)			
Print languages, standard	HP PCL 6; HP PCL 5c; HP postscript level 3 emulation, native PDF printing (v 1.7)			
Printer management	HP Web Jetadmin; Embedded Web Server; HP Security Manager; HP Insights; HP Advance; HP Command Center; HP Smart Device Services (SDS)			
Top key features	Flow; Touchscreen; Stapling; TerraJet Cartridge			
Target number of users and print volume	For teams up to 20 users; Prints up to 15,000 pages/month			
AIO functions	Print, copy, scan, fax			
Duplex print options	Automatic			
Print technology	Laser			
Paper trays, standard	4			
Capacity, Std.	Input	Up to 1750 sheets	Output	Up to 1000 sheets
Media type and capacity tray 1	Paper: 100 sheets of 75 g/m ² media; Envelopes: 10			
Paper handling input	Input	3x 550-sheet input trays; 100-sheet multi-purpose tray	Output	500-sheet output tray, 500-sheet output stapler stacker
Input Capacity, Max, Envelopes	Up to 10 envelopes			
Product short name	6801			
Typical Electricity Consumption (TEC) number	0.709 kWh/week (ENERGY STAR 3.0); 0.659 kWh/week (Blue Angel)			
Number of simultaneous users (local + network)	10-30 users			
Scan resolution	Hardware	Up to 600 x 600 dpi	Optical	Up to 600 x 600 dpi
	Enhanced	Up to 600 dpi		
Scan speed (normal, A4)	Up to 95 ppm/190 ipm (b&w), up to 95 ppm/190 ipm (color)			
Automatic Document Feeder Capacity	Standard, 150 sheets			
Color scanning	Yes			
Grayscale levels	256			
Scan input modes	Front Panel Applications: Copy; E-Mail; FAX; Save to Network Folder; Save to USB; Save to Device Memory; Open Extensibility Platform (OXP) Applications; HP Workpath Applications			

HP Color LaserJet Enterprise Flow MFP 6801zfsw technical specifications

Scan size maximum	ADF, metric	216 x 864 mm	ADF, imperial	8.5 x 34.0 in
	Flatbed, metric	216 x 356 mm	Flatbed, imperial	8.5 x 14 in
Scan size minimum	ADF, metric	68 x 127 mm	ADF, imperial	2.7 x 5 in
Bit depth	24-bit			
TWAIN Version	Version 2.4			
Scan file format	PDF; Hi-Compression PDF; PDF/A; JPEG; TIFF; MTIFF; XPS			
Scan type	Flatbed; ADF			
Security management	Identity management: Kerberos authentication; LDAP authentication; 1,000-user pin codes; optional HP and 3 rd party advanced authentication solutions (e.g. badge readers); Network: IPsec/firewall with Certificate; Pre-shared key; Supports WJA-10 IPsec configuration Plug-in; 802.1X authentication (EAP-PEAP, EAP-TLS); SNMPv3; HTTPS; Certificates; Access Control List; Data: Storage encryption; Encrypted PDF & Email (uses FIPS 140 validated cryptographic libraries from Microsoft); Secure Erase; SSL/TLS (HTTPS); Encrypted credentials; Device: Security lock slot; USB port disablement; Hardware Integration Pocket for security solutions; Intrusion Detection with Red Balloon Security technology (constant in-device monitoring for attacks); HP Sure Start Secure Boot (BIOS Integrity Checking with self-healing capability); Whitelisting (loads only known good code DLLs, EXEs, etc.); Security management: Compatible with Device Security Syslog Messages processed and accessible in Arcsight and Splunk SIEMs			
Services (Care Pack)	U45SXE - HP 3-year Next Business Day with DMR Service for Color LaserJet Enterprise MFP 680x; U45SYE - HP 4-year Next Business Day with DMR Service for Color LaserJet Enterprise MFP 680x; U45SZE - HP 5-year Next Business Day with DMR Service for Color LaserJet Enterprise MFP 680x; U45T0E - HP 3-year 4-hour 9x5 with DMR Service for Color LaserJet Enterprise MFP 680x; U45T1E - HP 4-year 4-hour 9x5 with DMR Service for Color LaserJet Enterprise MFP 680x; U45T2E - HP 5-year 4-hour 9x5 with DMR Service for Color LaserJet Enterprise MFP 680x; U45T3E - HP 3-year Next Business Day Call-to-Repair with DMR Service for Color LaserJet Enterprise MFP 680x; U45T4E - HP 4-year Next Business Day Call-to-Repair with DMR Service for Color LaserJet Enterprise MFP 680x; U45T5E - HP 5-year Next Business Day Call-to-Repair with DMR Service for Color LaserJet Enterprise MFP 680x; U45T6E - HP 3-year Channel Parts Exchange with DMR Service for Color LaserJet Enterprise MFP 680x; U45T7E - HP 4-year Channel Parts Exchange with DMR Service for Color LaserJet Enterprise MFP 680x; U45T8E - HP 5-year Channel Parts Exchange with DMR Service for Color LaserJet Enterprise MFP 680x; U45T9PE - HP 1-year Post Warranty Next Business Day with DMR Service for Color LaserJet Enterprise MFP 680x; U45TBPE - HP 2-year Post Warranty Next Business Day with DMR Service for Color LaserJet Enterprise MFP 680x; U45TCPE - HP 1-year Post Warranty 4-hour 9x5 with DMR Service for Color LaserJet Enterprise MFP 680x; U45TDPE - HP 2-year Post Warranty 4-hour 9x5 with DMR Service for Color LaserJet Enterprise MFP 680x; U45TFPE - HP 1-year PW NBD Call-to-Repair with DMR Service for Color LaserJet Enterprise MFP 680x; U45TGPE - HP 2-year PW NBD Call-to-Repair with DMR Service for Color LaserJet Enterprise MFP 680x; U45THPE - HP 1-year PW Channel Parts Exchange with DMR Service for Color LaserJet Enterprise MFP 680x; U45TJPE - HP 2-year PW Channel Parts Exchange with DMR Service for Color LaserJet Enterprise MFP 680x; U9JT2E - HP Installation Service with network configuration for workgroup printer (1 unit); U45VXE - HP Maintenance Kit Replacement Service for Color LaserJet Enterprise MFP 680x Fuser 110 Enhanced; U45VYE - HP Maintenance Kit Replacement Service for Color LaserJet Enterprise MFP 680x Fuser 220 Enhanced; U45VZE - HP Maintenance Kit Replacement Service for Color LaserJet Enterprise MFP 680x ITB; U45W0E - HP Maintenance Kit Replacement Service for Color LaserJet Enterprise MFP 680x ITB Kit; U45W1E - HP Maintenance Kit Replacement Service for Color LaserJet Enterprise MFP 680x X677xx TCU; U45W2E - HP Maintenance Kit Replacement Service for Color LaserJet Enterprise MFP 680x X677xx MP Tray Roller; U45W3E - HP Maintenance Kit Replacement Service for Color LaserJet Enterprise MFP 680x X677xx Tray 2 Roller			
Mac compatible	Yes			
Software included	No software solutions are included in the box, only on http://hp.com http://123.hp.com			
Media types	Paper (plain, light, intermediate, light bond, bond, recycled, mid-weight, heavy, mid-weight glossy, heavy glossy, extra heavy, extra heavy glossy, cardstock, card glossy), color transparency, labels, letterhead, envelope, pre-printed, pre-punched, colored, rough, opaque film, user-defined			
Standard media sizes supported	Metric	Tray 1: A4, A5, A6, RA4, B5, B6, 16k, 10 x 15 cm, Oficio, postcards (JIS single and double), envelopes (DL, C5, B5, C6); Tray 2, Tray 3, Tray 4: A4, A5, A6, RA4, B5, B6, 10 x 15 cm, Oficio, 16k, Dpostcard (JIS)	Imperial	Tray 1: Letter, Legal, Executive, Statement, Oficio, 3 x 5 in, 4 x 6 in, 5 x 7 in, 5 x 8 in, envelopes (No. 9, No. 10, Monarch); Tray 2, Tray 3, Tray 4: Letter, Legal, Executive, Statement, Oficio, 4 x 6 in, 5 x 7 in, 5 x 8 in
Media sizes custom	Metric	Tray 1: 64 x 127 to 216 x 1200 mm; Tray 2, Tray 3, Tray 4: 101 x 148 to 216 x 356 mm	Imperial	Tray 1: 2.52 x 5 to 8.5 x 47.24 in; Tray 2, Tray 3, Tray 4: 4 x 5.83 to 8.5 x 14 in
Media size, tray 1 (metric)	A4, A5, A6, RA4, B5, B6, 10 x 15 cm, Oficio 216 x 340, 16k, Postcard (JIS), DPostcard (JIS), Envelopes (DL, C5, B5, C6); custom 64 x 127 to 216 x 1200 mm			
Media weights supported, by paper path	Metric	Tray 1: 60 to 220 g/m ² (plain), 120 to 220 g/m ² (glossy); Tray 2: 60 to 220 g/m ² (plain), 120 to 220 g/m ² (glossy); Optional 550-sheet input trays: 60 to 220 g/m ² (plain), 120 to 220 g/m ² (glossy); Optional 2,100-sheet high-capacity input: 60 to 220 g/m ² (plain)	Imperial	Tray 1: 16 to 58 lb (plain), 32 to 58 lb (glossy); Tray 2: 16 to 58 lb (plain), 32 to 58 lb (glossy); Optional 550-sheet input trays: 16 to 58 lb (plain), 32 to 58 lb (glossy); Optional 2,100-sheet high-capacity input: 16 to 58 lb (plain)
Media weights supported, tray 1, (metric)	60 to 220 g/m ² (plain), 120 to 220 g/m ² (glossy)			
Media size, ADF	Letter; Legal; Oficio; Executive; Statement; 16K; A4; RA4; A5; A6; B5; B6 (JIS); Postcard (JIS); DPostcard (JIS); 4 x 6 in; 5 x 7 in; 5 x 8 in; 68 x 147 mm to 215.9 x 863.6 mm; 2.68 x 5.79 in to 8.46 x 34 in			
Media weights supported, ADF	Metric	45 to 199 g/m ²	Imperial	12 to 53 lb
Key media sizes supported	Metric	A4	Imperial	Letter; Legal
Control panel	10.1-inch touchscreen with color graphics			
System requirements	Macintosh, Minimum	2 GB available hard drive space; Internet connection; or USB port; Internet browser. For additional OS hardware requirements see apple.com	Minimum	2 GB available hard disk space; Internet connection; or USB port; Internet browser. For additional OS hardware requirements see microsoft.com
Manufacturer warranty	One-year Next Business Day Onsite Warranty. Warranty and support options vary by product, country and local legal requirements. Go to https://hp.com/support to learn about HP award-winning service and support options in your region.			
Weight	Metric	74.55 kg	Imperial	164.00 lb
Package weight	Metric	94.32 kg	Imperial	207.50 lb

HP Color LaserJet Enterprise Flow MFP 6801zfw+ technical specifications

Metric	1.6 GHz			
Orderable supplies ¹³	HP LaserJet Toner Collection Unit 527F9A; HP LaserJet 110V Enhanced Fuser Kit 527G2A; HP LaserJet 220V Enhanced Fuser Kit 527G3A; HP LaserJet Image Transfer Belt 527G8A; HP LaserJet Image Transfer Belt Kit 527G9A; HP LaserJet Tray 2 Roller Kit 527H2A; HP LaserJet MP Tray Roller Kit 527H3A; HP LaserJet ADF Maintenance Kit 6H122A; HP LaserJet ADF Flow Maintenance Kit 6M1P3A; HP Staple Cartridge Refill (5,000 staples) J8J96A; HP Staple Cartridge Pack (3,000 staples) Q7432A			
Printer smart software features	Apple AirPrint™, Mopria-certified, Open Extensibility Platform, FutureSmart firmware, Instant-on Technology, HP Auto-On/Auto-Off technology, Easy-access USB, Two-sided printing, Hardware Integration Pocket, Intuitive 10.1-in touchscreen control panel, print multiple pages per sheet (2, 4, 6, 9, 16), collation, watermarks, store print jobs, print preview			
Power consumption description	717 watts (Printing/copying), 63.4 watts (Ready), 1.1 watts (Sleep), 0.1 watts (Auto Off/Manual On), 0.1 watts (Manual off)			
Power supply	Type	Built in 110V or 200V power supply (not dual voltage, power supply varies by part number with option code identifier)	Required	Input voltage: 100V to 127V nominal (+/-10%), 50 - 60 Hz nominal (+/- 3Hz), 12A; Input voltage: 220V to 240V nominal, (+/-10%) 50 - 60 Hz nominal (+/- 3 Hz), 6A
What is in the box	HP Color LaserJet Multifunction Printer; HP Black Original LaserJet Toner Cartridge (~9,000 yield), HP Cyan, Magenta, and Yellow Original LaserJet Toner Cartridges (~6,000 yield each) (toner cartridges installed); Documentation (Hardware Installation guide); Power cord			
Replacement cartridges ²	HP 213A Black Original LaserJet Toner Cartridge (~3,500 pages) W2130A; HP 213A Cyan Original LaserJet Toner Cartridge (~3,000 pages) W2131A; HP 213A Yellow Original LaserJet Toner Cartridge (~3,000 pages) W2132A; HP 213A Magenta Original LaserJet Toner Cartridge (~3,000 pages) W2133A; HP 213X High Yield Black Original LaserJet Toner Cartridge (~9,000 pages) W2130X; HP 213X High Yield Cyan Original LaserJet Toner Cartridge (~6,000 pages) W2131X; HP 213X High Yield Yellow Original LaserJet Toner Cartridge (~6,000 pages) W2132X; HP 213X High Yield Magenta Original LaserJet Toner Cartridge (~6,000 pages) W2133X; HP 213Y Extra High Yield Black Original LaserJet Toner Cartridge (~18,000 pages) W2130Y; HP 213Y Extra High Yield Cyan Original LaserJet Toner Cartridge (~12,000 pages) W2131Y; HP 213Y Extra High Yield Yellow Original LaserJet Toner Cartridge (~12,000 pages) W2132Y; HP 213Y Extra High Yield Magenta Original LaserJet Toner Cartridge (~12,000 pages) W2133Y; HP 217Z Ultra Yield Black Original LaserJet Toner Cartridge (~32,000 pages) W2170Z; HP 217Z Ultra Yield Cyan Original LaserJet Toner Cartridge (~24,000 pages) W2171Z; HP 217Z Ultra Yield Yellow Original LaserJet Toner Cartridge (~24,000 pages) W2172Z; HP 217Z Ultra Yield Magenta Original LaserJet Toner Cartridge (~24,000 pages) W2173Z			
Supplies Feature	TerraJet Cartridge			
Electromagnetic emission standard	CISPR 22:2008 (International) Class A, CISPR 32:2015 (International) Class A / EN 55032:2015 Class A + A1:2020, CISPR 35:2016 (International) / EN 55035:2017 + A1:2020, EN IEC 61000-3-2:2019, EN 61000-3-3:2013 + A1:2019 + A2:2021, FCC 47 CFR Part 15 Class A, ICES-003, Issue 7 Class A. Other EMC approvals as required by individual countries			
Safety approvals and requirements	IEC 60950-1:2005 + A1:2009 + A2:2013 (International); IEC 62368-1:2014; EN 62368-1:2014 (EU); EN 60825-1:2014 + A1:2021/IEC 60825-1:2014 (Class 1 Laser Product); EN 62479:2010/IEC 62479:2010; IEC 62471:2006 / EN 62471:2008; Low Voltage Directive 2014/35/EU with CE Mark (Europe); GS certificate (Germany, Europe); UL/cUL Listed and UC CoC (US/Canada); UL62368-1 2 nd Ed. 2014-12-01; CSA C22.2 No. 62368-14, 2 nd Ed.; Compliance with laser safety standards 21 CFR 1040.10 and 1040.11 except for deviations pursuant to Laser Notice No. 56, dated May 8, 2019; Other safety approvals as required by individual countries			
ENERGY STAR® certified	Yes			
Ecolabels	CECP; IT ECO Declaration; Blue Angel; EPEAT® Gold registered; SEPA; KOECO			
Blue Angel compliance	Yes, Blue Angel DE-UZ 219—only ensured when using Original HP supplies			
Sustainable impact specifications	15% post-consumer recycled plastic; ENERGY STAR® certified; EPEAT® registered			
Network capabilities	Yes, via HP Jetdirect Ethernet embedded print server (standard) which supports: 10Base-T, 100Base-Tx, 1000Base-T; 802.3az (EEE) support on Fast Ethernet and Gig Links; IPsec (standard); 802.11a/b/g/n wireless networking			
Wireless Capability	Yes, wireless direct			
Supported network protocols	Via built-in networking solution: TCP/IP, IPv4, IPv6; Print: TCP-IP port 9100 Direct Mode, LPD (raw queue support only), Web Services printing, IPP 2.0, Apple AirPrint™, FTP Print, Google Cloud Print; Discovery: SLP, Bonjour, Web Services Discovery; IP Config: IPv4 (BootP, DHCP, AutoIP, Manual, TFTP Config, ARP-Ping), IPv6 (Stateless Link-Local and via Router, Stateless via DHCPv6); Management: SNMPv2/v3, HTTP/HTTPS, Telnet, TFTP Config, FTP FW Download, Syslog; Security: SNMPv3, SSL Cert Management, Firewall, ACL, 802.1x			
Mobile printing capability	Mopria™ certified; Apple AirPrint™; NFC touch-to-print (optional)			
Connectivity, std.	1 Bluetooth Low Energy; 1 Fax; 1 Front USB port; 1 Gigabit Ethernet 10/100/1000T network; 1 Hardware Integration Pocket 2nd generation (HIP2); 1 SuperSpeed USB 3.0 (device); 1 SuperSpeed USB 3.0 (host); 1 Wi-Fi 802.11ac (dual band); 1 Wi-Fi Direct			
Copier reduce/enlarge	25 to 400%			
Max. number of copies	Up to 9,999 copies			
Copy resolution	Black text	Up to 600 x 600 dpi	Color text and graphics	Up to 600 x 600 dpi
Copy speed (Black)	Normal, A4	Up to 61 cpm	Normal, Letter	Up to 65 cpm
Copy speed (Color)	Normal, A4	Up to 61 cpm	Normal, Letter	Up to 65 cpm
Digital sending standard features	Scan to Email; Scan to network folder; Scan to USB Drive; Scan to SharePoint; Scan to FTP; Scan to SFTP; Scan to LAN Fax; Scan to Internet Fax; local address book; SMTP over SSL; automatically detect color/monochrome; high compression PDF; image adjustments (darkness, contrast, background clean-up, sharpness); optimize text/picture (text, mixed, printed picture, photograph); content orientation; scan mode (book, 2-sided ID); erase edges; auto page crop; job build; image preview; blank page suppression; automatically straighten; embedded OCR; optimize text/picture (auto); Scan to multi-destination; automatic tone; auto orientation; multi-feed detection; Reverse and Retry; document editing; auto paper color removal; job separation (blank page, barcode); watermark; stamps			
Package dimensions	Metric	790x760x1339 mm	Imperial	31.10x29.92x52.72 in
Max dimensions	Metric	1552 x 939 x 1383 mm	Imperial	61.1 x 37.0 x 54.4 in
Product dimensions	Metric	1202 x 559 x 1147 mm	Imperial	47.3 x 22.0 x 45.2 in
Display description	10.1-in Color Graphic Display (CGD) with touchscreen; rotating (adjustable angle)			
Acoustic power emissions (active, printing)	6.7 Bel(A)			
Acoustic pressure Emissions bystander (ready)	19 dB(A)			
Operating humidity range	10 to 80% RH			

HP Color LaserJet Enterprise Flow MFP 6801zfw+ technical specifications

Operating humidity range (recommended)	30 to 70% RH			
Operating temperature range	Celsius	10 to 32.5°C	Fahrenheit	50 to 91°F
Operating temperature range	Recommended celsius	15 to 27°C	Recommended fahrenheit	59 to 80.6°F
Storage temperature range	Celsius	-20 to 40°C	Fahrenheit	-4 to 104°F
Fax	Yes			
Fax speed (Letter)	3 sec per page			
Fax speed	Up to 33.6 kbps			
Memory	Standard	6 GB	Maximum	6 GB
Print resolution technologies	HP ImageREt 3600, Enhanced (600 x 600 dpi), Fine Lines (1200 x 1200 dpi), Quickview (300 x 300 dpi)			
Print resolution color (Best)	Up to 1200 x 1200 dpi			
Print speed (Black)	Normal, A4	Up to 61 ppm	Normal, letter	Up to 65 ppm
Print speed (Color)	Normal, A4	Up to 61 ppm	Normal, letter	Up to 65 ppm
Print Speed (Letter)	Up to 65 ppm (black) and 65 ppm (color)			
First page out (Black)	A4, ready	As fast as 7.9 sec	Letter, ready	As fast as 7.8 sec
First page out (Color)	A4, ready	As fast as 8.7 sec	Letter, ready	As fast as 8.6 sec
Monthly duty cycle	A4	Up to 100,000 pages	Letter	Up to 100,000 pages
Recommended monthly page volume	Up to 30,000 pages			
Fonts and typefaces	105 internal TrueType fonts scalable in HP PCL, 92 internal scalable fonts in HP postscript level 3 emulation (Euro symbol built-in); 1 internal Unicode fonts (Andale Mono WorldType); 2 internal Windows Vista 8 fonts (Calibri, Cambria); additional font solutions available via third-party flash memory cards; HP LaserJet Fonts and IPDS Emulation available at http://www.hp.com/go/laserjetfonts			
Hard disk	Standard, minimum 500 GB HDD; Optional, 256 GB SSD			
Print languages, standard	HP PCL 6; HP PCL 5c; HP postscript level 3 emulation, native PDF printing (v 1.7)			
Printer Management	HP Web Jetadmin; Embedded Web Server; HP Security Manager; HP Insights; HP Advance; HP Command Center; HP Smart Device Services (SDS)			
Top key features	Flow; Touchscreen; Stapling; TerraJet cartridge			
Target number of users and print volume	For teams up to 20 users; Prints up to 15,000 pages/month			
AIO functions	Print, copy, scan, fax			
Duplex print options	Automatic			
Print technology	Laser			
Paper trays, standard	5			
Capacity, std.	Input	Up to 3300 sheets	Output	Up to 3300 sheets
Media type and capacity tray 1	Paper: 100 sheets of 75 g/m ² media; Envelopes: 10			
Paper handling standard	Input	2x 550-sheet input trays; 2,100-sheet high capacity input; 100-sheet multi-purpose tray	Output	100 sheet output tray; 200 sheet output tray with hole punch; 1200 sheet output tray with hole punch & offset stacking; 1800 sheet output tray with hole punch, offset stacking & staple
Input capacity, max. envelopes	Up to 10 envelopes			
Product short name	6801			
Typical Electricity Consumption (TEC) number	0.709 kWh/week (ENERGY STAR 3.0); 0.659 kWh/week (Blue Angel)			
Number of simultaneous users (local + network)	10-30 users			
Scan resolution	Hardware	Up to 600 x 600 dpi	Optical	Up to 600 x 600 dpi
	Enhanced	Up to 600 dpi		
Scan speed (normal, A4)	Up to 95 ppm/190 ipm (b&w), up to 95 ppm/190 ipm (color)			
Automatic Document Feeder capacity	Standard, 150 sheets			
Color scanning	Yes			
Grayscale levels	256			
Scan input modes	Front Panel Applications: Copy; E-Mail; FAX; Save to Network Folder; Save to USB; Save to Device Memory; Open Extensibility Platform (OXF) Applications, HP Workpath Applications			

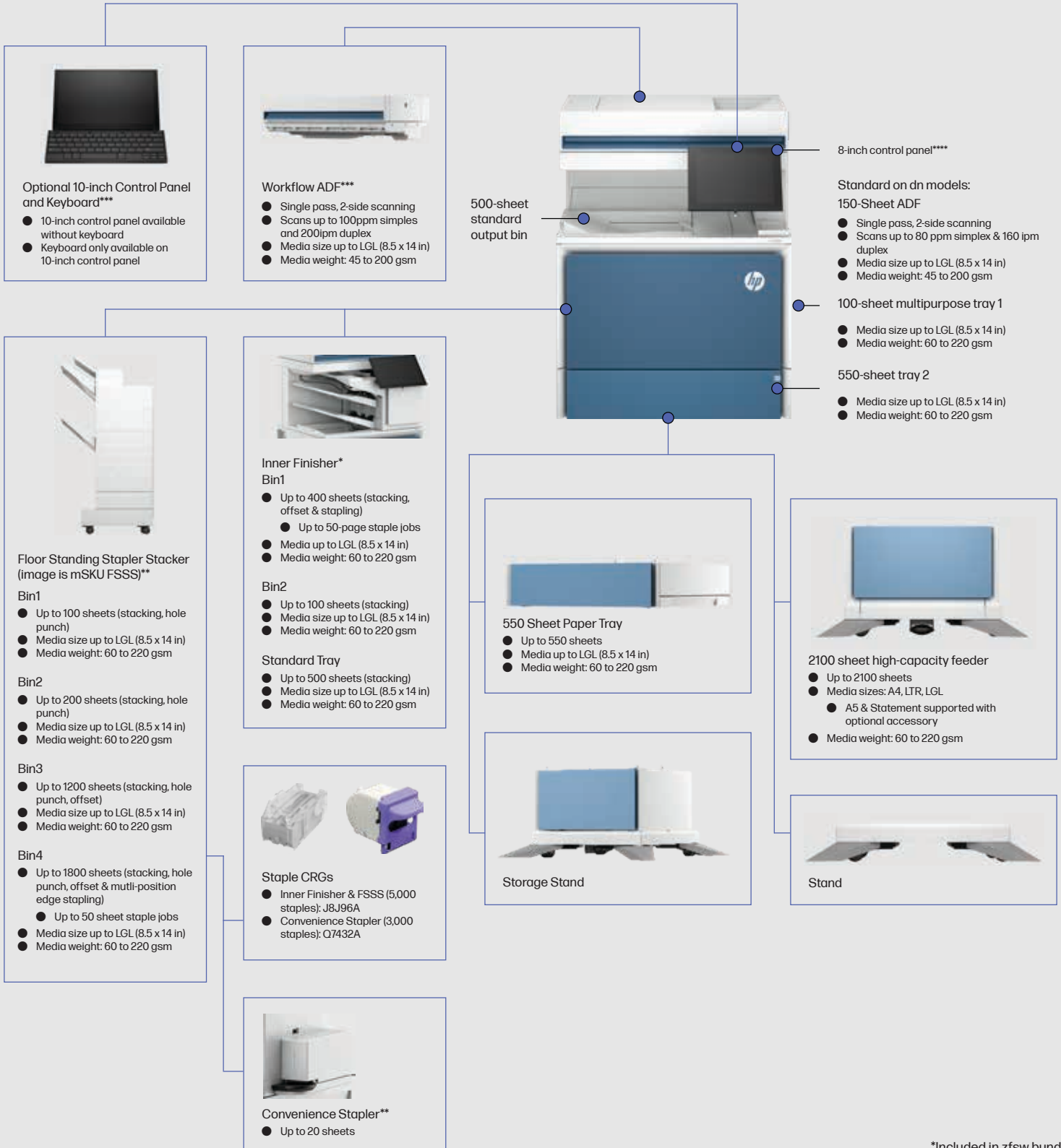
6800 accessories

Accessory Description	Accessory SKU #
HP Accessibility Kit	2TD64A
HP Internal USB Expansion Kit	4XN67A
HP Jetdirect LAN Accessory	8FP31A
HP Foreign Interface Harness	B5L31A
HP LaserJet Keyboard Overlay Kit for Simplified Chinese & Traditional Chinese*	A7W12A
HP LaserJet Keyboard Overlay Kit-Danish/French-Switzerland/German-Switzerland*	A7W13A
HP LaserJet Swedish Overlay Keyboard*	A7W14A
HP SmartCard NIPRNet Solution for US Government	CC543B
HP SmartCard SIPRNet Solution for US Government	F8B30A
HP Removable Hard Drive Enclosure	2NR12A
HP Printing Voice Assistant	478C2A
HP MFP Analog Fax 702 Accessory	1M0Q0A
HP MFP Analog Fax 703 Accessory (BBU option code only)	1M0Q1A
HP LaserJet Workflow Accelerator Card*	1M0Q5A
HP Color LaserJet Stand	6QN54A
HP Color LaserJet Storage Stand	6QN55A
HP Color LaserJet 550 Sheet Paper Tray	6QN57A
HP Color LaserJet 2100 HCI Feeder and Stand	6QN58A
HP LaserJet A5 HCI Guide Kit	616G9A
HP LaserJet Statement HCI Guide Kit	616H0A
HP LaserJet Workflow Keyboard*	1M0Q2A
HP LaserJet Workflow UK Keyboard*	616H2A
HP USB Universal Card Reader	X3D03A
HP HIP2 Keystroke Reader	Y7C05A
HP Legic Secure USB Reader	4QL32A
HP HID Mob Acc Mifare DES Fire KS Reader	35H11A
HP 500GB CCC FIPS Hard Disk Drive	9EQ11A
HP Jetdirect 3100w BLE/NFC/Wireless	3JN69A
HP Color LaserJet Constellation Yellow 550 sheet Paper Tray	65A28A
HP Color LaserJet Cosmic Green 550 sheet Paper Tray	65A29A
HP Color LaserJet Aurora Purple 550 sheet Paper Tray	65A30A
HP Color LaserJet Comet Red 550 sheet Paper Tray	65A31A
HP Color LaserJet Lunar Gray 550 sheet Paper Tray	65A32A
HP Color LaserJet Constellation Yellow 2100 sheet High Capacity Paper Tray/Stand	65A33A
HP Color LaserJet Cosmic Green 2100 sheet High Capacity Paper Tray/Stand	65A34A
HP Color LaserJet Aurora Purple 2100 sheet High Capacity Paper Tray/Stand	65A35A
HP Color LaserJet Comet Red 2100 sheet High Capacity Paper Tray/Stand	65A36A
HP Color LaserJet Lunar Gray 2100 sheet High Capacity Paper Tray/Stand	65A37A
HP Color LaserJet Constellation Yellow Storage Stand	65A38A
HP Color LaserJet Cosmic Green Storage Stand	65A39A
HP Color LaserJet Aurora Purple Storage Stand	65A40A
HP Color LaserJet Comet Red Storage Stand	65A41A
HP Color LaserJet Lunar Gray Storage Stand	65A42A

*only compatible with flow models

Configuration

HP Color LaserJet Enterprise 6800 series



*Included in zfsw bundles

** Included in zfw+ bundles

*** Included in zf, zfsw & zfw+ bundles

****Included in dn bundles

Paper handling accessories

Stand and input devices

Paper input and stand options



Product number	6QN57A	6QN54A	6QN55A	6QN58A
Product description	HP Color LaserJet 550 sheet paper tray	HP Color LaserJet stand	HP Color LaserJet storage stand	HP Color LaserJet 2100 high capacity feeder and stand
Configuration: 6800dn/6800zf	Compatible (up to 3 or 1 if storage stand or HCI is added) Desktop: Recommended add up to 1	Compatible Recommended: Add stand if 3x 550 trays are added	Compatible	Compatible
Configuration: 6800zfs/6801zfs	Built in hardware (2)	Built in hardware	N/A	N/A
Configuration: 6800zfw+/6801zfw+	Built in hardware (1)	N/A	N/A	Built in hardware



© Copyright 2023 HP Development Company, L.P. The information contained herein is subject to change without notice. The only warranties for HP products and services are set forth in the express warranty statements accompanying such products and services. Nothing herein should be construed as constituting an additional warranty. HP shall not be liable for technical or editorial errors or omissions contained herein.

The only warranties for HP products and services are set forth in the express warranty statements accompanying such products and services. Nothing herein should be construed as constituting an additional warranty. HP shall not be liable for technical or editorial errors or omissions contained herein. No HP trademark notice is required, nor is any acknowledgement of another party's trademarks unless we are contractually obligated to do so, e.g., Microsoft or Intel MDF program commitments. See the Trademarks website for the list of such marks.