



PRISMAprepare

PROFESSIONAL MAKEREADY SOLUTION


Canon






PRISMA

prepare




Navigate through
your document
for easy selecting,
inserting, and
rearranging of pages




WYSIWYG preview
for proper imposition,
tab layout, & mixed
media jobs



Automation templates
and hot folders make
prepress simple¹



Organize and
clean digital or
hard-copy originals¹



Adjust and change
colors effortlessly
using built-in color
tools

PERFECTING PREPARATION



OUTSTANDING PRODUCTIVITY

- Quick and efficient document preparation includes integrated variable data print, helping to streamline prepress workflow tasks.
- The powerful WYSIWYG preview interface allows you to see exactly what the end product will look like—soft-copy proofing without the need to print.
- Online training makes learning the application quick and easy.



BRILLIANT VERSATILITY

- Built-in color tools give you control to adjust and change colors as needed.¹
- Optimize settings in production to reduce task time.
- Collect and clean up pages from digital or hard-copy sources, PDF, or Microsoft® Office files.¹



STREAMLINE PERFORMANCE

- Automation templates and hot folders make preparing repetitive jobs an easy, fast, and efficient task, helping printers¹ avoid errors and maintain job-to-job consistency.
- Virtually device-independent means you can prepare documents for production on Canon and/or select printers accepting PDF, PCL, and PS files, thereby utilizing and optimizing the capability of your entire fleet.

MAKE AN IMPACT WITH INNOVATIVE TECHNOLOGIES



PRISMAprepare is a highly functional, all-in-one solution that accelerates document preparation from composition through production. A simple user interface helps ensure that operators of any skill level can perform preparation tasks quickly and efficiently, all while delivering consistent quality results.

Tasks such as creating booklets, single- or double-sided tabs, or impositioning are now simplified and easily repeatable through advanced automation. PRISMAprepare helps meet the high demand of clients with tight deadlines. The use of open standards provides the ability to print to any digital press accepting PDF and Adobe® PostScript® files, thereby protecting your investment.

The core of PRISMAprepare is a native, 64-bit application, allowing for additional processing capacity.





POWERFUL SIMPLICITY

Production Workspace

ONE DYNAMIC VIEW

The production workspace helps to provide the user with one powerful view.

ADVANTAGES

- Access a dedicated, robust production workspace providing multiple views such as structured, sheet, page, and VDP, all within a single viewing pane.
- Switch between different workspaces without losing your settings.
- Measure the imposed file using guidelines without having to print the PDF in the page workspace.
- Configure barcode value by individual and multiple sheets to identify jobs, sheet number, and finishing type.
- Support and drive more jobs and more near-line finishing devices by saving the barcodes for reuse, including all the position settings.
- Online soft proofing virtually helps eliminate the need for hard-copy proofs, saving money and time.

Enhanced Accuracy

EFFICIENCY MANAGED

With WYSIWYG job capabilities, you get just that! Help reduce wasted time, effort, or hard copy layout proofs. The WYSIWYG function applies to layout and finishing options. Display the position of staples, hole punches, and folds. Shift page content on the fly to accommodate folds, finishing artifacts, text on tabs, and spine captures.

MANAGE AND VIEW

View thumbnails to navigate through your document for fast and easy selecting, inserting, or rearranging of pages.



MAXIMIZE YOUR INVESTMENT



Connect and Protect

HELP UNLEASH THE FULL POTENTIAL OF YOUR FLEET

PRISMAprepare is virtually device-independent, allowing you to prepare documents for production on Canon's varioPRINT 140 series, varioPRINT 6000 TITAN Series, imagePRESS V Family production color digital presses, or other select printers accepting PDF and PS files.² Accelerate impositioning of customer files with the ability to open multiple file types such as JPEG, TIFF, and multipage TIFF. PRISMAprepare maximizes productivity by preparing documents independently of the printing devices.

OPEN INTERFACE

Leverage many existing creative tools for detailed content editing. PRISMAprepare supports direct linking of up to 10 different Windows®-based, stand-alone PDF applications. You can open a page of your document from PRISMAprepare in Adobe® Photoshop®,³ Adobe Illustrator®,² or other compatible PDF-based editing tool. After making the desired edits, the changes are directly applied to your document in PRISMAprepare.

INTEGRATED WORKFLOW

Integrate into the bigger picture! Work with broader workflow solutions such as PRISMAdirect, an order and production management tool, and take a job from submission to finished product. All PRISMA workflow solutions share a common user interface. Pairing PRISMA workflow solutions with Canon's PRISMAsync family of print servers for digital production presses offers maximum integration and productivity. Optimal printer support with preferential JDF "driver-less" function.



SCALABLE DOCUMENT MAKEREADY

Dynamic Capabilities Help You Produce Great Work

All workflow environments and/or businesses are unique, and each job comes with various challenges. Meeting customer demands while trying to maintain profits requires strategic planning. PRISMAprepare can help! Its feature-rich foundation includes unlimited printers and multiple (concurrent) operators, a robust production workspace, and all the necessary functions of a great makeready environment. And its modular, versatile, and flexible design comes at a great price point.

This solution is virtually all you need in a makeready application. The base functionality provides one version with unlimited printers and up to 99 multiple operators (concurrent users). Eight (8) makeready modular options allow you to define your environment's needs (Automation, Scan Cleanup, VDP, Advanced Document Creation, Advanced Impositioning, Spot Color Editing, Preflight, and Prepare to Finish). Contact your Production Print Architect to help configure the best solution.

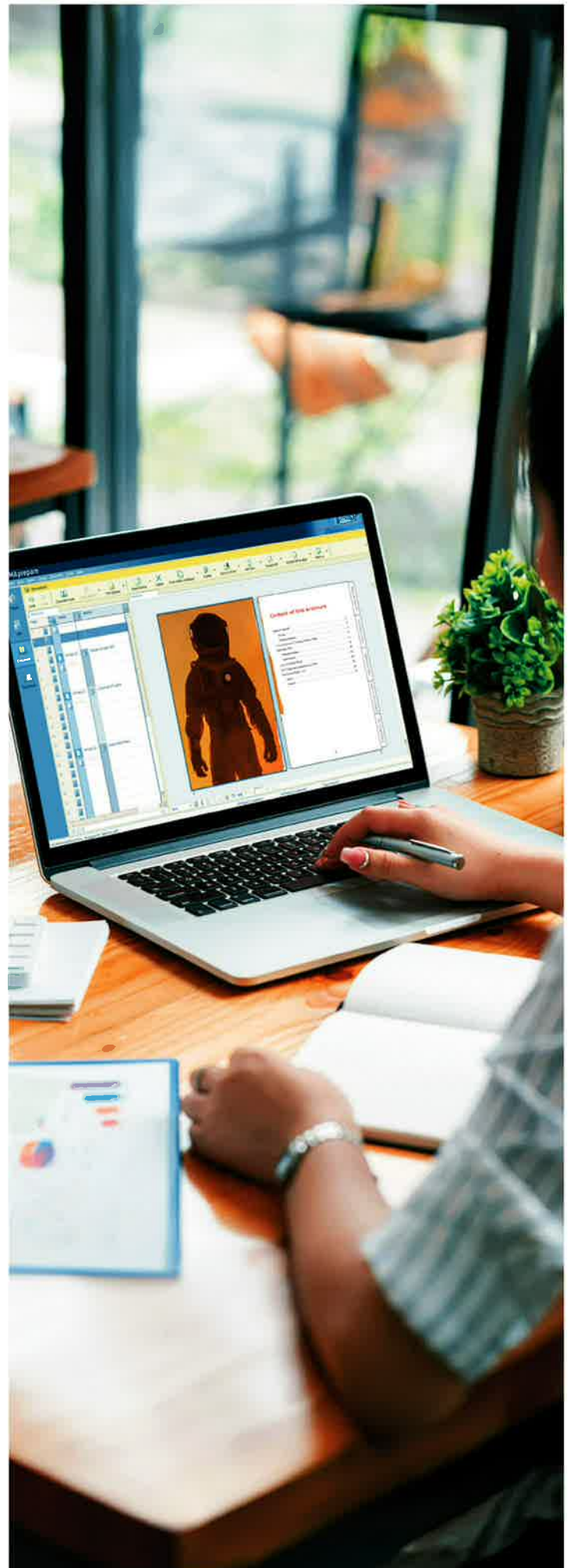
Intuitive Operation

Tasks are made clear through a highly visual user interface, one with a common design throughout the entire suite of PRISMA workflow solutions. An intuitive interface for searching, sorting, and filtering of jobs means production environments can bring new efficiency to daily workloads.

Empowering Your Presses

PRISMAsync print servers efficiently and effectively drive Canon sheet-fed digital production presses, including these models:

- imagePRESS V900 series
- imagePRESS V1000
- imagePRESS V1350
- varioPRINT 140 series QUARTZ
- varioPRINT 6000 series TITAN



Add Functionality as You Grow Your Business

MAKEREADY WORKFLOW STEPS



COMPOSITION

Collect PDF sections from digital and analog sources.



IMAGE

Correct and clean up imperfections; replace, change, or modify image colors.



CONTENT

Edit and change text. Add variable data and/or images (VDP).



LAYOUT

Determine the final layout of the document.



MEDIA

Assign media to pages and sections.



PRODUCTION

Optimize productivity; choose the right production and finishing device.

BASE

Collect, replace, copy, and delete pages from scanning or opening in folder on local PC; create sections from bookmarks; on page level, resize or scale pages; automatic conversion of native MS files.

Convert color to grayscale; edit RGB and CMYK color for images in a document for color or brightness/contrast.

Edit text in a document.

Basic booklet creation; (full-bleed) tabs from bookmarks; (section) headers and footers; stapling, folding; stamp.

Import media catalog from PRISMAsync and Fiery (JDF-enabled); export to PRISMAprepare or PRISMAsync JDF-enabled media-driven workflow independent of printer.

Basic imposition based on functionality available in layout makeready (advanced) color split and merge, creep compensation.

OPTIONS

AUTOMATION

Nearly all makeready steps can be automated using a hot folder or CLI.

SCAN CLEANUP

Create and rasterize images of an electronic PDF file; despeckle (also color), deskew, align, and erase part of pages.

VDP
Add text, images, and barcodes based on external data (e.g., Excel).

ADVANCED DOCUMENT CREATION

More layout options such as perfect-bound, multi-booklet, signature, notepads, toner-free glue zone, covers, same up all pages.

ADVANCED IMPOSITIONING

PDF box editing impositioning options, print marks, near-line finishing (barcodes).

ADVANCED IMPOSITIONING

Edit and/or create PDF boxes.

SPOT COLOR EDITING

Edit spot colors on page and VDP; spot color library.

PREPARE TO FINISH

Support for new line of finishers based on JDF (via ultimate bindery).¹

PREFLIGHT

Basic preflighting based on nine rules (to cover the 80/20 rule), including auto creation of report to email to customer.¹

¹ Optional license required.

² Digital press and printer support for PRISMAprepare software versions vary. Contact your Canon Authorized representative for compatibility information.

³ For detailed compatibility information of PDF-based software applications, please contact your Canon Authorized representative.



Canon

canon.us/PRISMA

To see what printers are supported, please view the PRISMA Solutions Guide.

Canon and imagePRESS are registered trademarks of Canon Inc. in the United States and may also be registered trademarks or trademarks in other countries. varioPRINT and PRISMA are registered trademarks of Canon Production Printing Netherlands B.V. All other referenced product names and marks are trademarks of their respective owners. Canon products offer certain security features, yet many variables can impact the security of your devices and data. You may want to test these settings in your environment. Canon does not warrant that use of its features will prevent security issues. All features discussed may not apply to all Series and/or products and may be optional; please check with your Canon Authorized representative for details. Nothing herein should be construed as legal or regulatory advice concerning applicable laws. Canon U.S.A., does not provide legal counsel or regulatory compliance consultancy, including without limitation, Sarbanes-Oxley, HIPAA, GLBA, Check 21 or the USA Patriot Act. Each customer must have its own qualified counsel determine the advisability of a particular solution as it relates to regulatory and statutory compliance. Subscription to a third-party cloud service required. Subject to third-party cloud service provider's Terms and Conditions. Screen images may be simulated. Specifications and availability subject to change without notice. Not responsible for typographical errors.

©2025 Canon U.S.A., Inc. All rights reserved.

06/25-1654-11705